



[Go to Product page](#)

Datasheet for ABIN6745450  
**anti-HOXB1 antibody (C-Term)**

1 Image

Overview

Quantity:	100 µL
Target:	HOXB1
Binding Specificity:	C-Term
Reactivity:	Human, Mouse, Cow, Rabbit, Pig, Guinea Pig, Hamster
Host:	Rabbit
Clonality:	Polyclonal
Conjugate:	This HOXB1 antibody is un-conjugated
Application:	Western Blotting (WB)

Product Details

Immunogen:	Synthetic peptide from C-Terminus of human HOXB1 (P14653, NP_002135). Percent identity by BLAST analysis: Human, Chimpanzee, Gorilla, Orangutan, Monkey, Mouse, Hamster, Panda, Rabbit, Pig, Guinea pig (100%), Marmoset, Rat, Dog, Horse (92%), Galago, Bovine, Bat (85%), Elephant (84%).  Type of Immunogen: Synthetic peptide
Specificity:	Human HOXB1
Predicted Reactivity:	Percent identity by BLAST analysis: Human, Mouse, Rabbit (100%) Rat, Dog (92%) Bovine (85%).
Purification:	Immunoaffinity purified

## Target Details

---

Target:	HOXB1
Alternative Name:	HOXB1 ( <a href="#">HOXB1 Products</a> )
Background:	Name/Gene ID: HOXB1  Synonyms: HOXB1, Homeo box B1, Homeobox protein Hox-2l, Hox-2.9, HCFP3, Homeobox protein Hox-B1, HOX2l, Homeobox B1, HOX2
Gene ID:	3211
NCBI Accession:	<a href="#">NP_002135</a>
UniProt:	<a href="#">P14653</a>

## Application Details

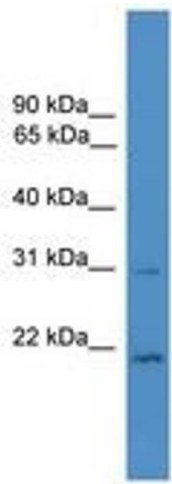
---

Application Notes:	Approved: WB (0.2 - 1 µg/mL)  Usage: Western Blot: Suggested dilution at 1 µg/mL in 5 % skim milk / PBS buffer, and HRP conjugated anti-Rabbit IgG should be diluted in 1: 50,000 - 100,000 as secondary antibody.
Comment:	Target Species of Antibody: Human
Restrictions:	For Research Use only

## Handling

---

Format:	Lyophilized
Reconstitution:	Distilled water
Concentration:	Lot specific
Buffer:	Lyophilized from PBS with 2 % sucrose
Handling Advice:	Avoid repeat freeze-thaw cycles.
Storage:	4 °C, -20 °C
Storage Comment:	Long term: -20°C, the use of 50% glycerol is recommended if storing aliquots in -20°C for long term use (up to 1 year)  Short term (less than 1 week): 4°C. Avoid freeze-thaw cycles.



**Image 1.**