



[Go to Product page](#)

Datasheet for ABIN6745451
anti-ZMAT2 antibody (C-Term)

1 Image

Overview

Quantity:	100 µL
Target:	ZMAT2
Binding Specificity:	C-Term
Reactivity:	Human, Mouse, Cow, Dog, Horse, Rabbit, Zebrafish (Danio rerio), Pig, Chicken, Hamster, Monkey
Host:	Rabbit
Clonality:	Polyclonal
Conjugate:	This ZMAT2 antibody is un-conjugated
Application:	Western Blotting (WB)

Product Details

Immunogen:	Synthetic peptide from C-Terminus of human ZMAT2 (Q96NC0, NP_653324). Percent identity by BLAST analysis: Human, Chimpanzee, Gorilla, Gibbon, Monkey, Galago, Marmoset, Mouse, Hamster, Elephant, Panda, Dog, Bovine, Rabbit, Horse, Pig, Opossum, Turkey, Chicken, Platypus (100%), Rat, Guinea pig, Lizard (92%), Bat, Xenopus, Trout, Pike (85%). Type of Immunogen: Synthetic peptide
Specificity:	Human ZMAT2
Predicted Reactivity:	Percent identity by BLAST analysis: Human, Mouse, Dog, Bovine, Chicken (100%) Rat (92%) Xenopus (85%).
Purification:	Immunoaffinity purified

Target Details

Target:	ZMAT2
Alternative Name:	ZMAT2 (ZMAT2 Products)
Background:	Name/Gene ID: ZMAT2 Synonyms: ZMAT2, HSNU23, Snu23, Zinc finger, matrin type 2, Ptg-12, Zinc finger, matrin-type 2
Gene ID:	153527
NCBI Accession:	NP_653324
UniProt:	Q96NC0

Application Details

Application Notes:	Approved: WB (0.2 - 1 µg/mL) Usage: Western Blot: Suggested dilution at 1 µg/mL in 5 % skim milk / PBS buffer, and HRP conjugated anti-Rabbit IgG should be diluted in 1: 50,000 - 100,000 as secondary antibody.
Comment:	Target Species of Antibody: Human
Restrictions:	For Research Use only

Handling

Format:	Lyophilized
Reconstitution:	Distilled water
Concentration:	Lot specific
Buffer:	Lyophilized from PBS with 2 % sucrose
Handling Advice:	Avoid repeat freeze-thaw cycles.
Storage:	4 °C, -20 °C
Storage Comment:	Long term: -20°C, the use of 50% glycerol is recommended if storing aliquots in -20°C for long term use (up to 1 year) Short term (less than 1 week): 4°C. Avoid freeze-thaw cycles.

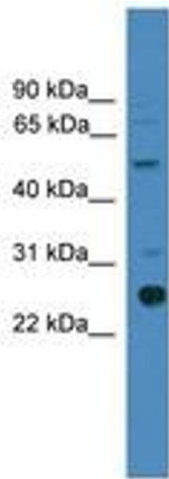


Image 1.