



[Go to Product page](#)

Datasheet for ABIN6745457
anti-ARMC8 antibody (AA 21-70)

1 Image

Overview

| | |
|----------------------|---|
| Quantity: | 100 µL |
| Target: | ARMC8 |
| Binding Specificity: | AA 21-70 |
| Reactivity: | Human, Mouse, Rabbit, Cow, Dog, Guinea Pig, Horse, Bat, Hamster, Xenopus laevis |
| Host: | Rabbit |
| Clonality: | Polyclonal |
| Conjugate: | This ARMC8 antibody is un-conjugated |
| Application: | Western Blotting (WB) |

Product Details

| | |
|-----------------------|---|
| Immunogen: | Synthetic peptide located between aa21-70 of human ARMC8 (Q8IUR7, NP_998819). Percent identity by BLAST analysis: Human, Chimpanzee, Gorilla, Orangutan, Gibbon, Monkey, Galago, Mouse, Hamster, Dog, Bovine, Bat, Rabbit, Horse, Opossum, Guinea pig, Xenopus (100%), Marmoset, Rat, Lizard (92%), Elephant, Turkey, Zebra finch, Chicken (85%). Type of Immunogen: Synthetic peptide |
| Specificity: | Human ARMC8 |
| Predicted Reactivity: | Percent identity by BLAST analysis: Human, Mouse, Dog, Bovine, Rabbit, Horse, Guinea pig, Xenopus (100%) Rat (92%) Chicken (85%). |
| Purification: | Immunoaffinity purified |

Target Details

Target: ARMC8

Alternative Name: ARMC8 ([ARMC8 Products](#))

Background: Name/Gene ID: ARMC8

Synonyms: ARMC8, DKFZP434A043, HSPC056, GID5, VID28, S863-2, Armadillo repeat containing 8

Gene ID: 25852

NCBI Accession: [NP_998819](#)

UniProt: [Q8IUR7](#)

Application Details

Application Notes: Approved: WB (0.2 - 1 µg/mL)

Usage: Western Blot: Suggested dilution at 1 µg/mL in 5 % skim milk / PBS buffer, and HRP conjugated anti-Rabbit IgG should be diluted in 1: 50,000 - 100,000 as secondary antibody.

Comment: Target Species of Antibody: Human

Restrictions: For Research Use only

Handling

Format: Lyophilized

Reconstitution: Distilled water

Concentration: Lot specific

Buffer: Lyophilized from PBS with 2 % sucrose

Handling Advice: Avoid repeat freeze-thaw cycles.

Storage: 4 °C, -20 °C

Storage Comment: Long term: -20°C, the use of 50% glycerol is recommended if storing aliquots in -20°C for long term use (up to 1 year)

Short term (less than 1 week): 4°C. Avoid freeze-thaw cycles.

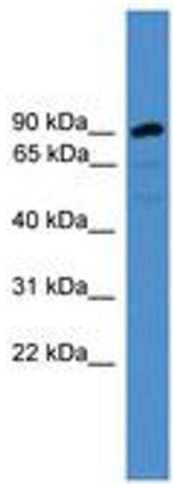


Image 1.