



[Go to Product page](#)

Datasheet for ABIN6745462

## anti-TMEM180 antibody (AA 361-411)

### 1 Image

#### Overview

Quantity:	100 µL
Target:	TMEM180
Binding Specificity:	AA 361-411
Reactivity:	Human, Mouse, Rabbit, Rat, Cow, Dog, Guinea Pig, Horse, Hamster, Monkey, Pig
Host:	Rabbit
Clonality:	Polyclonal
Conjugate:	This TMEM180 antibody is un-conjugated
Application:	Western Blotting (WB)

#### Product Details

Immunogen:	Synthetic peptide located between aa361-411 of human TMEM180 (Q14CX5, NP_079065). Percent identity by BLAST analysis: Human, Chimpanzee, Gorilla, Gibbon, Monkey, Galago, Marmoset, Mouse, Rat, Hamster, Panda, Dog, Bovine, Rabbit, Horse, Pig, Guinea pig (100%), Elephant, Bat, Opossum, Turkey, Zebra finch, Chicken (92%), Lizard, Xenopus (85%).  Type of Immunogen: Synthetic peptide
Specificity:	Human TMEM180
Predicted Reactivity:	Percent identity by BLAST analysis: Human, Dog, Horse, Guinea pig (100%) Xenopus (85%).
Purification:	Immunoaffinity purified

## Target Details

---

Target:	TMEM180
Alternative Name:	TMEM180 ( <a href="#">TMEM180 Products</a> )
Background:	Name/Gene ID: TMEM180  Synonyms: TMEM180, BA18I14.8, C10orf77, RP11-18I14.8, Transmembrane protein 180
Gene ID:	79847
NCBI Accession:	<a href="#">NP_079065</a>
UniProt:	<a href="#">Q14CX5</a>

## Application Details

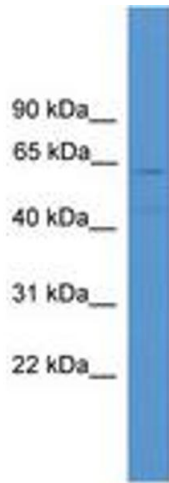
---

Application Notes:	Approved: WB (0.2 - 1 µg/mL)  Usage: Western Blot: Suggested dilution at 1 µg/mL in 5 % skim milk / PBS buffer, and HRP conjugated anti-Rabbit IgG should be diluted in 1: 50,000 - 100,000 as secondary antibody.
Comment:	Target Species of Antibody: Human
Restrictions:	For Research Use only

## Handling

---

Format:	Lyophilized
Reconstitution:	Distilled water
Concentration:	Lot specific
Buffer:	Lyophilized from PBS with 2 % sucrose
Handling Advice:	Avoid repeat freeze-thaw cycles.
Storage:	4 °C, -20 °C
Storage Comment:	Long term: -20°C, the use of 50% glycerol is recommended if storing aliquots in -20°C for long term use (up to 1 year)  Short term (less than 1 week): 4°C. Avoid freeze-thaw cycles.



**Image 1.**