



[Go to Product page](#)

Datasheet for ABIN6745465
anti-Usp30 antibody (AA 141-190)

1 Image

Overview

Quantity:	100 µL
Target:	Usp30
Binding Specificity:	AA 141-190
Reactivity:	Human, Mouse, Rat, Dog, Monkey, Cow, Guinea Pig, Horse, Rabbit, Bat
Host:	Rabbit
Clonality:	Polyclonal
Conjugate:	This Usp30 antibody is un-conjugated
Application:	Western Blotting (WB)

Product Details

Immunogen:	Synthetic peptide located between aa141-190 of human USP30 (Q70CQ3, NP_116052). Percent identity by BLAST analysis: Human, Chimpanzee, Gorilla, Gibbon, Monkey, Galago, Marmoset, Mouse, Rat, Elephant, Dog, Bovine, Bat, Rabbit, Horse, Guinea pig, Platypus (100%), Pig, Turkey, Zebra finch, Xenopus (92%), Chicken, Stickleback (85%). Type of Immunogen: Synthetic peptide
Specificity:	Human USP30
Predicted Reactivity:	Percent identity by BLAST analysis: Human, Rat, Dog, Bovine, Rabbit, Guinea pig (100%) Pig (92%) Chicken (85%).
Purification:	Immunoaffinity purified

Target Details

Target:	Usp30
Alternative Name:	USP30 (Usp30 Products)
Background:	Name/Gene ID: USP30 Synonyms: USP30, Ubiquitin thiolesterase 30, Ubiquitin specific protease 30, Deubiquitinating enzyme 30, Ub-specific protease 30, Ubiquitin thioesterase 30, Ubiquitin-specific protease 30
Gene ID:	84749
NCBI Accession:	NP_116052
UniProt:	Q70CQ3

Application Details

Application Notes:	Approved: WB (0.2 - 1 µg/mL) Usage: Western Blot: Suggested dilution at 1 µg/mL in 5 % skim milk / PBS buffer, and HRP conjugated anti-Rabbit IgG should be diluted in 1: 50,000 - 100,000 as secondary antibody.
Comment:	Target Species of Antibody: Human
Restrictions:	For Research Use only

Handling

Format:	Lyophilized
Reconstitution:	Distilled water
Concentration:	Lot specific
Buffer:	Lyophilized from PBS with 2 % sucrose
Handling Advice:	Avoid repeat freeze-thaw cycles.
Storage:	4 °C, -20 °C
Storage Comment:	Long term: -20°C, the use of 50% glycerol is recommended if storing aliquots in -20°C for long term use (up to 1 year) Short term (less than 1 week): 4°C. Avoid freeze-thaw cycles.

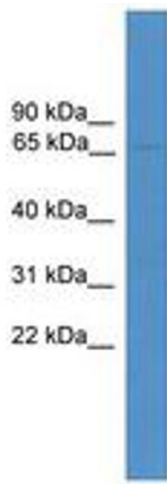


Image 1.