



Datasheet for ABIN6745466
anti-BSCL2 antibody (AA 362-410)



[Go to Product page](#)

1 Image

Overview

Quantity:	100 µL
Target:	BSCL2
Binding Specificity:	AA 362-410
Reactivity:	Human, Mouse, Rat, Cow, Dog, Rabbit, Monkey, Xenopus laevis
Host:	Rabbit
Clonality:	Polyclonal
Conjugate:	This BSCL2 antibody is un-conjugated
Application:	Western Blotting (WB)

Product Details

Immunogen:	Synthetic peptide located between aa362-410 of human BSCL2 (Q96G97, NP_001116427). Percent identity by BLAST analysis: Human, Chimpanzee, Gorilla, Orangutan, Gibbon, Monkey, Galago, Mouse, Rat, Rabbit, Xenopus (100%), Bat, Horse (92%), Dog, Bovine (85%), Elephant (84%). Type of Immunogen: Synthetic peptide
Specificity:	Human BSCL2
Predicted Reactivity:	Percent identity by BLAST analysis: Human, Mouse, Rat, Rabbit (100%) Horse (92%) Dog, Bovine (85%).
Purification:	Immunoaffinity purified

Target Details

Target:	BSCL2
Alternative Name:	BSCL2 (BSCL2 Products)
Background:	Name/Gene ID: BSCL2 Synonyms: BSCL2, GNG3LG, SPG17, HMN5, Seipin
Gene ID:	26580
NCBI Accession:	NP_001116427
UniProt:	Q96G97

Application Details

Application Notes:	Approved: WB (0.2 - 1 µg/mL) Usage: Western Blot: Suggested dilution at 1 µg/mL in 5 % skim milk / PBS buffer, and HRP conjugated anti-Rabbit IgG should be diluted in 1: 50,000 - 100,000 as secondary antibody.
Comment:	Target Species of Antibody: Human
Restrictions:	For Research Use only

Handling

Format:	Lyophilized
Reconstitution:	Distilled water
Concentration:	Lot specific
Buffer:	Lyophilized from PBS with 2 % sucrose
Handling Advice:	Avoid repeat freeze-thaw cycles.
Storage:	4 °C, -20 °C
Storage Comment:	Long term: -20°C, the use of 50% glycerol is recommended if storing aliquots in -20°C for long term use (up to 1 year) Short term (less than 1 week): 4°C. Avoid freeze-thaw cycles.

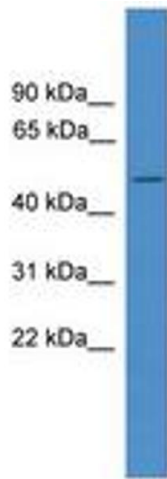


Image 1.