



Datasheet for ABIN6745467
anti-ATG9B antibody (AA 851-900)



[Go to Product page](#)

1 Image

Overview

Quantity:	100 µL
Target:	ATG9B
Binding Specificity:	AA 851-900
Reactivity:	Human, Horse, Monkey, Pig
Host:	Rabbit
Clonality:	Polyclonal
Conjugate:	This ATG9B antibody is un-conjugated
Application:	Western Blotting (WB)

Product Details

Immunogen:	Synthetic peptide located between aa851-900 of human ATG9B (Q674R7, NP_775952). Percent identity by BLAST analysis: Human, Chimpanzee, Gorilla, Monkey, Marmoset, Horse (100%), Gibbon, Mouse, Rat, Guinea pig (92%), Pig (85%). Type of Immunogen: Synthetic peptide
Specificity:	Human ATG9B / APG9L2
Predicted Reactivity:	Percent identity by BLAST analysis: Human, Horse (100%) Mouse, Rat (92%) Pig (85%).
Purification:	Immunoaffinity purified

Target Details

Target:	ATG9B
---------	-------

Target Details

Alternative Name: [ATG9B \(ATG9B Products\)](#)

Background: Name/Gene ID: ATG9B

Synonyms: ATG9B, Autophagy related 9B, Autophagy 9-like 2 protein, Autophagy-related protein 9B, Protein sONE, SONE, NOS3AS, APG9-like 2, APG9L2

Gene ID: 285973

NCBI Accession: [NP_775952](#)

UniProt: [Q674R7](#)

Application Details

Application Notes: Approved: WB (0.2 - 1 µg/mL)

Usage: Western Blot: Suggested dilution at 1 µg/mL in 5 % skim milk / PBS buffer, and HRP conjugated anti-Rabbit IgG should be diluted in 1: 50,000 - 100,000 as secondary antibody.

Comment: Target Species of Antibody: Human

Restrictions: For Research Use only

Handling

Format: Lyophilized

Reconstitution: Distilled water

Concentration: Lot specific

Buffer: Lyophilized from PBS with 2 % sucrose

Handling Advice: Avoid repeat freeze-thaw cycles.

Storage: 4 °C, -20 °C

Storage Comment: Long term: -20°C, the use of 50% glycerol is recommended if storing aliquots in -20°C for long term use (up to 1 year)

Short term (less than 1 week): 4°C. Avoid freeze-thaw cycles.

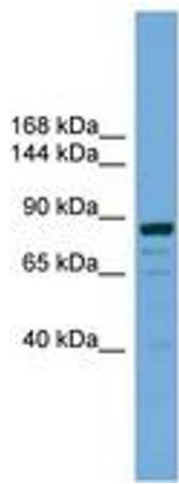


Image 1.