

Datasheet for ABIN6745482
anti-RPAIN antibody (C-Term)[Go to Product page](#)

1 Image

Overview

Quantity:	100 µL
Target:	RPAIN
Binding Specificity:	C-Term
Reactivity:	Human, Mouse, Rat, Cow, Guinea Pig, Monkey
Host:	Rabbit
Clonality:	Polyclonal
Conjugate:	This RPAIN antibody is un-conjugated
Application:	Western Blotting (WB)

Product Details

Immunogen:	Synthetic peptide from C-Terminus of human RPAIN (Q86UA6, NP_001028174). Percent identity by BLAST analysis: Human, Chimpanzee, Gorilla, Gibbon, Monkey, Marmoset, Rat (100%), Elephant, Bat, Horse (92%), Galago, Guinea pig (85%), Bovine (84%), Mouse (78%). Type of Immunogen: Synthetic peptide
Specificity:	Human RPAIN
Predicted Reactivity:	Percent identity by BLAST analysis: Human (100%) Guinea pig (85%) Bovine (84%).
Purification:	Immunoaffinity purified

Target Details

Target:	RPAIN
---------	-------

Target Details

Alternative Name:	RPAIN (RPAIN Products)
Background:	Name/Gene ID: RPAIN Family: Transporter Synonyms: RPAIN, HRIP, RPA interacting protein, RIP, RAP interaction protein, RPA-interacting protein, Nuclear transporter
Gene ID:	84268
NCBI Accession:	NP_001028174
Pathways:	Protein targeting to Nucleus

Application Details

Application Notes:	Approved: WB (0.2 - 1 µg/mL) Usage: Western Blot: Suggested dilution at 1 µg/mL in 5 % skim milk / PBS buffer, and HRP conjugated anti-Rabbit IgG should be diluted in 1: 50,000 - 100,000 as secondary antibody.
Comment:	Target Species of Antibody: Human
Restrictions:	For Research Use only

Handling

Format:	Lyophilized
Reconstitution:	Distilled water
Concentration:	Lot specific
Buffer:	Lyophilized from PBS with 2 % sucrose
Handling Advice:	Avoid repeat freeze-thaw cycles.
Storage:	4 °C, -20 °C
Storage Comment:	Long term: -20°C, the use of 50% glycerol is recommended if storing aliquots in -20°C for long term use (up to 1 year) Short term (less than 1 week): 4°C. Avoid freeze-thaw cycles.

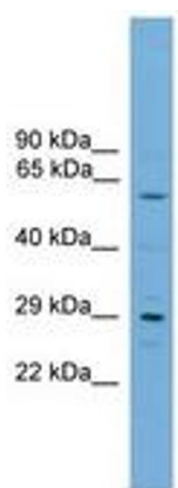


Image 1.