



[Go to Product page](#)

Datasheet for ABIN6745495

anti-Malectin antibody (AA 214-263)

1 Image

Overview

Quantity:	100 µL
Target:	Malectin (MLEC)
Binding Specificity:	AA 214-263
Reactivity:	Human, Pig, Rabbit, Cow, Dog, Horse, Mouse, Rat, Monkey, Bat, Xenopus laevis
Host:	Rabbit
Clonality:	Polyclonal
Conjugate:	This Malectin antibody is un-conjugated
Application:	Western Blotting (WB)

Product Details

Immunogen:	Synthetic peptide located between aa214-263 of human MLEC (Q14165, NP_055545). Percent identity by BLAST analysis: Human, Chimpanzee, Gorilla, Gibbon, Monkey, Galago, Marmoset, Mouse, Rat, Elephant, Dog, Bovine, Bat, Rabbit, Horse, Pig, Xenopus (100%), Zebra finch, Platypus, Zebrafish (92%), Turkey, Chicken, Stickleback (85%). Type of Immunogen: Synthetic peptide
Specificity:	Human MLEC
Predicted Reactivity:	Percent identity by BLAST analysis:
Purification:	Immunoaffinity purified

Target Details

Target:	Malectin (MLEC)
Alternative Name:	KIAA0152 / MLEC (MLEC Products)
Background:	Name/Gene ID: MLEC Synonyms: MLEC, KIAA0152, Malectin
Gene ID:	9761
NCBI Accession:	NP_055545
UniProt:	Q14165

Application Details

Application Notes:	Approved: WB (0.2 - 1 µg/mL) Usage: Western Blot: Suggested dilution at 1 µg/mL in 5 % skim milk / PBS buffer, and HRP conjugated anti-Rabbit IgG should be diluted in 1: 50,000 - 100,000 as secondary antibody.
Comment:	Target Species of Antibody: Human
Restrictions:	For Research Use only

Handling

Format:	Lyophilized
Reconstitution:	Distilled water
Concentration:	Lot specific
Buffer:	Lyophilized from PBS with 2 % sucrose
Handling Advice:	Avoid repeat freeze-thaw cycles.
Storage:	4 °C, -20 °C
Storage Comment:	Long term: -20°C, the use of 50% glycerol is recommended if storing aliquots in -20°C for long term use (up to 1 year) Short term (less than 1 week): 4°C. Avoid freeze-thaw cycles.

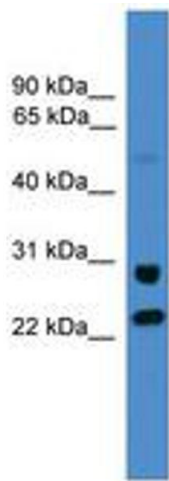


Image 1.