



Datasheet for ABIN6745498  
**anti-NRBP1 antibody (AA 51-100)**



[Go to Product page](#)

1 Image

### Overview

Quantity:	100 µL
Target:	NRBP1
Binding Specificity:	AA 51-100
Reactivity:	Human, Mouse, Rat, Monkey, Dog, Cow, Horse, Rabbit, Guinea Pig, Hamster, Bat, Chicken, Pig, Xenopus laevis
Host:	Rabbit
Clonality:	Polyclonal
Conjugate:	This NRBP1 antibody is un-conjugated
Application:	Western Blotting (WB)

### Product Details

Immunogen:	Synthetic peptide located between aa51-100 of human NRBP1 (Q9UHY1, NP_037524). Percent identity by BLAST analysis: Human, Chimpanzee, Gorilla, Orangutan, Gibbon, Monkey, Marmoset, Mouse, Rat, Hamster, Elephant, Panda, Dog, Bovine, Bat, Rabbit, Horse, Pig, Opossum, Guinea pig, Turkey, Zebra finch, Sparrow, Chicken, Platypus, Xenopus (100%), Drosophila (84%).  Type of Immunogen: Synthetic peptide
Specificity:	Human NRBP1
Predicted Reactivity:	Percent identity by BLAST analysis: Human, Mouse, Dog, Bovine, Rabbit, Horse, Chicken, Xenopus (100%).

## Product Details

---

Purification: Immunoaffinity purified

## Target Details

---

Target: NRBP1

Alternative Name: NRBP1 / NRBP ([NRBP1 Products](#))

Background: Name/Gene ID: NRBP1  
Subfamily: NRBP  
Family: Protein Kinase

Synonyms: NRBP1, MUDPNP, NRBP, BCON3, MADM

Gene ID: 29959

NCBI Accession: [NP\\_037524](#)

UniProt: [Q9UHY1](#)

Pathways: [Nuclear Receptor Transcription Pathway](#)

## Application Details

---

Application Notes: Approved: WB (0.2 - 1 µg/mL)

Usage: Western Blot: Suggested dilution at 1 µg/mL in 5 % skim milk / PBS buffer, and HRP conjugated anti-Rabbit IgG should be diluted in 1: 50,000 - 100,000 as secondary antibody.

Comment: Target Species of Antibody: Human

Restrictions: For Research Use only

## Handling

---

Format: Lyophilized

Reconstitution: Distilled water

Concentration: Lot specific

Buffer: Lyophilized from PBS with 2 % sucrose

Handling Advice: Avoid repeat freeze-thaw cycles.

Storage: 4 °C, -20 °C

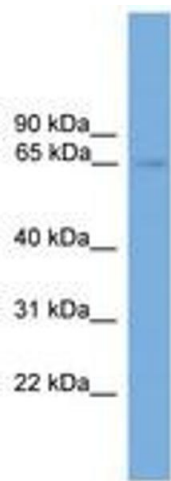
## Handling

---

Storage Comment: Long term: -20°C, the use of 50% glycerol is recommended if storing aliquots in -20°C for long term use (up to 1 year)  
Short term (less than 1 week): 4°C. Avoid freeze-thaw cycles.

## Images

---



**Image 1.**