



[Go to Product page](#)

Datasheet for ABIN6745499
anti-ETHE1 antibody (AA 92-141)

1 Image

Overview

Quantity:	100 µL
Target:	ETHE1
Binding Specificity:	AA 92-141
Reactivity:	Human, Mouse, Rat, Cow, Dog, Guinea Pig, Horse
Host:	Rabbit
Clonality:	Polyclonal
Conjugate:	This ETHE1 antibody is un-conjugated
Application:	Western Blotting (WB)

Product Details

Immunogen:	Synthetic peptide located between aa92-141 of human ETHE1 (O95571, NP_055112). Percent identity by BLAST analysis: Human, Chimpanzee, Gorilla, Gibbon, Monkey, Galago, Mouse, Rat, Elephant, Dog, Bovine, Horse, Guinea pig (100%), Marmoset (92%), Beetle (91%). Type of Immunogen: Synthetic peptide
Specificity:	Human ETHE1
Predicted Reactivity:	Percent identity by BLAST analysis: Human, Mouse, Rat, Dog, Bovine, Horse, Guinea pig (100%).
Purification:	Immunoaffinity purified

Target Details

Target:	ETHE1
---------	-------

Target Details

Alternative Name: [ETHE1 \(ETHE1 Products\)](#)

Background: Name/Gene ID: ETHE1

Synonyms: ETHE1, D83198, Ethylmalonic encephalopathy 1, HSCO, YF13H12, Protein ETHE1, mitochondrial

Gene ID: 23474

NCBI Accession: [NP_055112](#)

UniProt: [O95571](#)

Application Details

Application Notes: Approved: WB (0.2 - 1 µg/mL)

Usage: Western Blot: Suggested dilution at 1 µg/mL in 5 % skim milk / PBS buffer, and HRP conjugated anti-Rabbit IgG should be diluted in 1: 50,000 - 100,000 as secondary antibody.

Comment: Target Species of Antibody: Human

Restrictions: For Research Use only

Handling

Format: Lyophilized

Reconstitution: Distilled water

Concentration: Lot specific

Buffer: Lyophilized from PBS with 2 % sucrose

Handling Advice: Avoid repeat freeze-thaw cycles.

Storage: 4 °C, -20 °C

Storage Comment: Long term: -20°C, the use of 50% glycerol is recommended if storing aliquots in -20°C for long term use (up to 1 year)

Short term (less than 1 week): 4°C. Avoid freeze-thaw cycles.

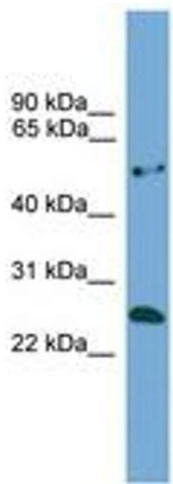


Image 1.