

Datasheet for ABIN6745503
anti-RAB9B antibody (AA 20-69)



[Go to Product page](#)

1 Image

Overview

Quantity:	100 µL
Target:	RAB9B
Binding Specificity:	AA 20-69
Reactivity:	Human, Mouse, Rat, Rabbit, Cow, Dog, Guinea Pig, Horse, Pig, Monkey, Chicken, Bat
Host:	Rabbit
Clonality:	Polyclonal
Conjugate:	This RAB9B antibody is un-conjugated
Application:	Western Blotting (WB)

Product Details

Immunogen:	Synthetic peptide located between aa20-69 of human RAB9B (Q9NP90, NP_057454). Percent identity by BLAST analysis: Human, Chimpanzee, Gorilla, Orangutan, Gibbon, Monkey, Galago, Marmoset, Mouse, Rat, Elephant, Panda, Dog, Bovine, Bat, Rabbit, Horse, Pig, Opossum, Guinea pig, Zebra finch, Chicken, Platypus (100%), Xenopus, Stickleback (92%), Turkey, Zebrafish (85%). Type of Immunogen: Synthetic peptide
Specificity:	Human RAB9B
Predicted Reactivity:	Percent identity by BLAST analysis: Human, Mouse, Rat, Dog, Bovine, Chicken (100%).
Purification:	Immunoaffinity purified

Target Details

Target:	RAB9B
Alternative Name:	RAB9B (RAB9B Products)
Background:	Name/Gene ID: RAB9B Subfamily: RAS oncogene Family: Ras GTPase superfamily IPR001806 Synonyms: RAB9B, Rab-9L, RAB9L, RAB9-like protein, Ras-related protein Rab-9B, Rab-9-like protein
Gene ID:	51209
NCBI Accession:	NP_057454
UniProt:	Q9NP90

Application Details

Application Notes:	Approved: WB (0.2 - 1 µg/mL) Usage: Western Blot: Suggested dilution at 1 µg/mL in 5 % skim milk / PBS buffer, and HRP conjugated anti-Rabbit IgG should be diluted in 1: 50,000 - 100,000 as secondary antibody.
Comment:	Target Species of Antibody: Human
Restrictions:	For Research Use only

Handling

Format:	Lyophilized
Reconstitution:	Distilled water
Concentration:	Lot specific
Buffer:	Lyophilized from PBS with 2 % sucrose
Handling Advice:	Avoid repeat freeze-thaw cycles.
Storage:	4 °C, -20 °C
Storage Comment:	Long term: -20°C, the use of 50% glycerol is recommended if storing aliquots in -20°C for long term use (up to 1 year) Short term (less than 1 week): 4°C. Avoid freeze-thaw cycles.

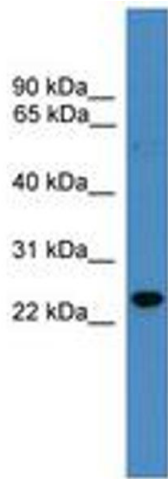


Image 1.