



[Go to Product page](#)

Datasheet for ABIN6745505
anti-KHDRBS2 antibody (AA 30-79)

1 Image

Overview

Quantity:	100 µL
Target:	KHDRBS2
Binding Specificity:	AA 30-79
Reactivity:	Human, Mouse, Cow, Dog, Guinea Pig, Horse, Monkey, Pig
Host:	Rabbit
Clonality:	Polyclonal
Conjugate:	This KHDRBS2 antibody is un-conjugated
Application:	Western Blotting (WB)

Product Details

Immunogen:	Synthetic peptide located between aa30-79 of human KHDRBS2 (Q5VWX1, NP_689901). Percent identity by BLAST analysis: Human, Chimpanzee, Gorilla, Monkey, Galago, Marmoset, Mouse, Elephant, Dog, Horse, Pig, Guinea pig (100%), Rat, Panda, Bat, Rabbit, Chicken (92%), Bovine, Opossum (85%). Type of Immunogen: Synthetic peptide
Specificity:	Human KHDRBS2
Predicted Reactivity:	Percent identity by BLAST analysis: Human, Dog, Horse, Pig, Guinea pig (100%) Rat, Chicken (92%) Bovine (85%).
Purification:	Immunoaffinity purified

Target Details

Target:	KHDRBS2
Alternative Name:	KHDRBS2 / SLM-1 (KHDRBS2 Products)
Background:	Name/Gene ID: KHDRBS2 Synonyms: KHDRBS2, HSLM-1, Sam68-like mammalian protein 1, SLM1, BA535F17.1, SLM-1
Gene ID:	202559
NCBI Accession:	NP_689901
UniProt:	Q5VWX1

Application Details

Application Notes:	Approved: WB (0.2 - 1 µg/mL) Usage: Western Blot: Suggested dilution at 1 µg/mL in 5 % skim milk / PBS buffer, and HRP conjugated anti-Rabbit IgG should be diluted in 1: 50,000 - 100,000 as secondary antibody.
Comment:	Target Species of Antibody: Human
Restrictions:	For Research Use only

Handling

Format:	Lyophilized
Reconstitution:	Distilled water
Concentration:	Lot specific
Buffer:	Lyophilized from PBS with 2 % sucrose
Handling Advice:	Avoid repeat freeze-thaw cycles.
Storage:	4 °C, -20 °C
Storage Comment:	Long term: -20°C, the use of 50% glycerol is recommended if storing aliquots in -20°C for long term use (up to 1 year) Short term (less than 1 week): 4°C. Avoid freeze-thaw cycles.

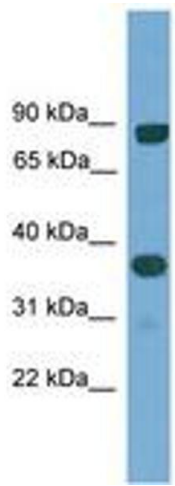


Image 1.