



[Go to Product page](#)

Datasheet for ABIN6745520  
**anti-RGS19 antibody (AA 26-75)**

1 Image

Overview

Quantity:	100 µL
Target:	RGS19
Binding Specificity:	AA 26-75
Reactivity:	Human, Mouse, Rat, Cow, Monkey
Host:	Rabbit
Clonality:	Polyclonal
Conjugate:	This RGS19 antibody is un-conjugated
Application:	Western Blotting (WB)

Product Details

Immunogen:	Synthetic peptide located between aa26-75 of human RGS19 (P49795, NP_001034556). Percent identity by BLAST analysis: Human, Chimpanzee, Gorilla, Gibbon, Monkey (100%), Galago, Marmoset, Mouse, Rat, Horse (85%), Bovine (84%).  Type of Immunogen: Synthetic peptide
Specificity:	Human RGS19
Predicted Reactivity:	Percent identity by BLAST analysis: Human (100%) Mouse, Rat (85%) Bovine (84%).
Purification:	Immunoaffinity purified

Target Details

Target:	RGS19
---------	-------

## Target Details

---

Alternative Name:	RGS19 ( <a href="#">RGS19 Products</a> )
Background:	Name/Gene ID: RGS19 Family: Regulator of G-protein signalling  Synonyms: RGS19, GNAI3IP, G alpha interacting protein, G-alpha-interacting protein, RGSGAIP, GAIP
Gene ID:	10287
NCBI Accession:	<a href="#">NP_001034556</a>
UniProt:	<a href="#">P49795</a>
Pathways:	<a href="#">Myometrial Relaxation and Contraction, Regulation of G-Protein Coupled Receptor Protein Signaling</a>

## Application Details

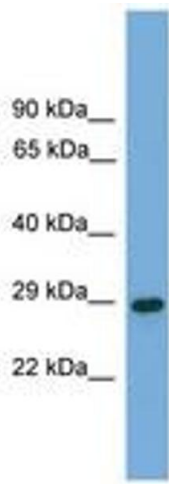
---

Application Notes:	Approved: WB (0.2 - 1 µg/mL)  Usage: Western Blot: Suggested dilution at 1 µg/mL in 5 % skim milk / PBS buffer, and HRP conjugated anti-Rabbit IgG should be diluted in 1: 50,000 - 100,000 as secondary antibody.
Comment:	Target Species of Antibody: Human
Restrictions:	For Research Use only

## Handling

---

Format:	Lyophilized
Reconstitution:	Distilled water
Concentration:	Lot specific
Buffer:	Lyophilized from PBS with 2 % sucrose
Handling Advice:	Avoid repeat freeze-thaw cycles.
Storage:	4 °C, -20 °C
Storage Comment:	Long term: -20°C, the use of 50% glycerol is recommended if storing aliquots in -20°C for long term use (up to 1 year) Short term (less than 1 week): 4°C. Avoid freeze-thaw cycles.



**Image 1.**