



[Go to Product page](#)

Datasheet for ABIN6745533
anti-RGS18 antibody (AA 41-90)

1 Image

Overview

Quantity:	100 µL
Target:	RGS18
Binding Specificity:	AA 41-90
Reactivity:	Rat, Mouse
Host:	Rabbit
Clonality:	Polyclonal
Conjugate:	This RGS18 antibody is un-conjugated
Application:	Western Blotting (WB)

Product Details

Immunogen:	Synthetic peptide located between aa41-90 of mouse Rgs18 (Q99PG4, NP_075019). Percent identity by BLAST analysis: Mouse (100%), Rat (85%). Type of Immunogen: Synthetic peptide
Specificity:	Mouse RGS18
Predicted Reactivity:	Percent identity by BLAST analysis: Mouse (100%) Rat (85%).
Purification:	Immunoaffinity purified

Target Details

Target:	RGS18
Alternative Name:	RGS18 (RGS18 Products)

Target Details

Background:	Name/Gene ID: RGS18 Family: Regulator of G-protein signalling Synonyms: RGS18
Gene ID:	64407
NCBI Accession:	NP_075019
UniProt:	Q9NS28
Pathways:	Myometrial Relaxation and Contraction , Regulation of G-Protein Coupled Receptor Protein Signaling

Application Details

Application Notes:	Approved: WB (0.2 - 1 µg/mL) Usage: Western Blot: Suggested dilution at 1 µg/mL in 5 % skim milk / PBS buffer, and HRP conjugated anti-Rabbit IgG should be diluted in 1: 50,000 - 100,000 as secondary antibody.
Comment:	Target Species of Antibody: Mouse
Restrictions:	For Research Use only

Handling

Format:	Lyophilized
Reconstitution:	Distilled water
Concentration:	Lot specific
Buffer:	Lyophilized from PBS with 2 % sucrose
Handling Advice:	Avoid repeat freeze-thaw cycles.
Storage:	4 °C, -20 °C
Storage Comment:	Long term: -20°C, the use of 50% glycerol is recommended if storing aliquots in -20°C for long term use (up to 1 year) Short term (less than 1 week): 4°C. Avoid freeze-thaw cycles.

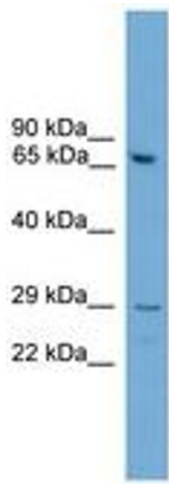


Image 1.