

Datasheet for ABIN6745546
anti-TPD52 antibody (AA 81-130)[Go to Product page](#)

1 Image

Overview

Quantity:	100 µL
Target:	TPD52
Binding Specificity:	AA 81-130
Reactivity:	Human, Mouse, Rat, Dog, Cow, Horse, Rabbit, Pig, Bat, Chicken
Host:	Rabbit
Clonality:	Polyclonal
Conjugate:	This TPD52 antibody is un-conjugated
Application:	Western Blotting (WB)

Product Details

Immunogen:	Synthetic peptide located between aa81-130 of human TPD52 (Q62393, NP_001020423). Percent identity by BLAST analysis: Human, Chimpanzee, Gorilla, Orangutan, Gibbon, Monkey, Mouse, Rat, Elephant, Dog, Bovine, Bat, Rabbit, Horse, Pig, Opossum, Turkey, Chicken (100%), Galago, Marmoset, Guinea pig, Zebra finch, Platypus, Lizard, Xenopus, Catfish, Salmon, Stickleback, Zebrafish (92%), Frog (84%). Type of Immunogen: Synthetic peptide
Specificity:	Human TPD52
Predicted Reactivity:	Percent identity by BLAST analysis: Human, Mouse, Rat, Dog, Bovine, Rabbit, Horse, Pig, Chicken (100%) Xenopus, Zebrafish (92%) Guinea pig (85%).
Purification:	Immunoaffinity purified

Target Details

Target:	TPD52
Alternative Name:	D52 / TPD52 (TPD52 Products)
Background:	Name/Gene ID: TPD52 Synonyms: TPD52, D52, HD52, PrLZ, Prostate leucine zipper, Protein N8, Tumor protein D52, N8L, Pc-1
Gene ID:	7163
NCBI Accession:	NP_001020423
UniProt:	P55327

Application Details

Application Notes:	Approved: WB (0.2 - 1 µg/mL) Usage: Western Blot: Suggested dilution at 1 µg/mL in 5 % skim milk / PBS buffer, and HRP conjugated anti-Rabbit IgG should be diluted in 1: 50,000 - 100,000 as secondary antibody.
Comment:	Target Species of Antibody: Human
Restrictions:	For Research Use only

Handling

Format:	Lyophilized
Reconstitution:	Distilled water
Concentration:	Lot specific
Buffer:	Lyophilized from PBS with 2 % sucrose
Handling Advice:	Avoid repeat freeze-thaw cycles.
Storage:	4 °C, -20 °C
Storage Comment:	Long term: -20°C, the use of 50% glycerol is recommended if storing aliquots in -20°C for long term use (up to 1 year) Short term (less than 1 week): 4°C. Avoid freeze-thaw cycles.

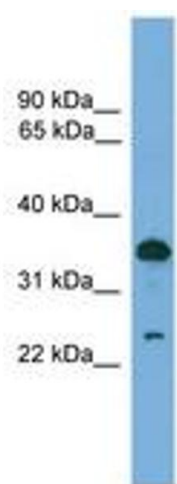


Image 1.