



[Go to Product page](#)

Datasheet for ABIN6745562  
**anti-FAM78A antibody (AA 211-260)**

1 Image

Overview

Quantity:	100 µL
Target:	FAM78A
Binding Specificity:	AA 211-260
Reactivity:	Human, Mouse, Rat, Dog, Monkey
Host:	Rabbit
Clonality:	Polyclonal
Conjugate:	This FAM78A antibody is un-conjugated
Application:	Western Blotting (WB)

Product Details

Immunogen:	Synthetic peptide located between aa211-260 of human FAM78A (Q5JUQ0, NP_203745). Percent identity by BLAST analysis: Human, Chimpanzee, Gorilla, Gibbon, Monkey, Marmoset, Mouse, Rat, Elephant, Panda, Dog, Opossum (100%), Bovine, Bat, Rabbit, Horse, Turkey, Zebra finch, Chicken, Platypus, Xenopus (92%), Galago, Guinea pig (85%).  Type of Immunogen: Synthetic peptide
Specificity:	Human FAM78A
Predicted Reactivity:	Percent identity by BLAST analysis: Human, Mouse, Rat, Dog (100%) Bovine, Chicken (92%).
Purification:	Immunoaffinity purified

## Target Details

---

Target: FAM78A

Alternative Name: FAM78A ([FAM78A Products](#))

Background: Name/Gene ID: FAM78A

Synonyms: FAM78A, C9orf59, Protein FAM78A, RP11-544A12.6

Gene ID: 286336

NCBI Accession: [NP\\_203745](#)

UniProt: [Q5JUQ0](#)

## Application Details

---

Application Notes: Approved: WB (0.2 - 1 µg/mL)

Usage: Western Blot: Suggested dilution at 0.5 µg/mL in 5 % skim milk / PBS buffer, and HRP conjugated anti-Rabbit IgG should be diluted in 1: 50,000 - 100,000 as secondary antibody.

Comment: Target Species of Antibody: Human

Restrictions: For Research Use only

## Handling

---

Format: Lyophilized

Reconstitution: Distilled water

Concentration: Lot specific

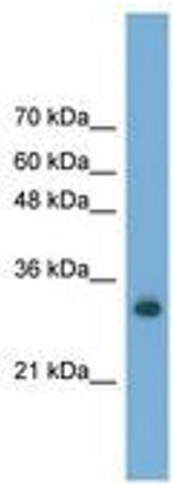
Buffer: Lyophilized from PBS with 2 % sucrose

Handling Advice: Avoid repeat freeze-thaw cycles.

Storage: 4 °C, -20 °C

Storage Comment: Long term: -20°C, the use of 50% glycerol is recommended if storing aliquots in -20°C for long term use (up to 1 year)

Short term (less than 1 week): 4°C. Avoid freeze-thaw cycles.



**Image 1.**