



[Go to Product page](#)

Datasheet for ABIN6745572
anti-TMEM107 antibody (AA 21-70)

1 Image

Overview

Quantity:	100 µL
Target:	TMEM107
Binding Specificity:	AA 21-70
Reactivity:	Human, Rat, Cow, Dog, Guinea Pig
Host:	Rabbit
Clonality:	Polyclonal
Conjugate:	This TMEM107 antibody is un-conjugated
Application:	Western Blotting (WB)

Product Details

Immunogen:	Synthetic peptide located between aa21-70 of human TMEM107 (Q6UX40-4, NP_115730). Percent identity by BLAST analysis: Human, Chimpanzee (100%), Gibbon, Monkey (92%), Bat (91%), Horse, Guinea pig (85%), Mouse, Rat (83%). Type of Immunogen: Synthetic peptide
Specificity:	Human TMEM107
Predicted Reactivity:	Percent identity by BLAST analysis: Human (100%) Guinea pig (85%) Rat (83%).
Purification:	Immunoaffinity purified

Target Details

Target:	TMEM107
---------	---------

Target Details

Alternative Name: TMEM107 ([TMEM107 Products](#))

Background: Name/Gene ID: TMEM107

Synonyms: TMEM107, Transmembrane protein 107, GRVS638, PRO1268

Gene ID: 84314

NCBI Accession: [NP_115730](#)

UniProt: [Q6UX40](#)

Application Details

Application Notes: Approved: WB (0.2 - 1 µg/mL)

Usage: Western Blot: Suggested dilution at 1 µg/mL in 5 % skim milk / PBS buffer, and HRP conjugated anti-Rabbit IgG should be diluted in 1: 50,000 - 100,000 as secondary antibody.

Comment: Target Species of Antibody: Human

Restrictions: For Research Use only

Handling

Format: Lyophilized

Reconstitution: Distilled water

Concentration: Lot specific

Buffer: Lyophilized from PBS with 2 % sucrose

Handling Advice: Avoid repeat freeze-thaw cycles.

Storage: 4 °C, -20 °C

Storage Comment: Long term: -20°C, the use of 50% glycerol is recommended if storing aliquots in -20°C for long term use (up to 1 year)
Short term (less than 1 week): 4°C. Avoid freeze-thaw cycles.

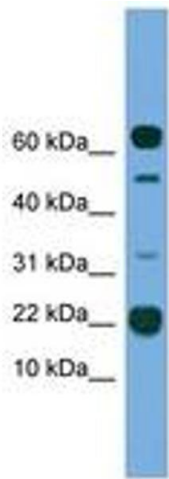


Image 1.