



[Go to Product page](#)

Datasheet for ABIN6745574
anti-SNX32 antibody (AA 251-300)

1 Image

Overview

Quantity:	100 µL
Target:	SNX32
Binding Specificity:	AA 251-300
Reactivity:	Human, Mouse, Dog, Monkey
Host:	Rabbit
Clonality:	Polyclonal
Conjugate:	This SNX32 antibody is un-conjugated
Application:	Western Blotting (WB)

Product Details

Immunogen:	Synthetic peptide located between aa251-300 of human SNX32 (Q86XE0, NP_689973). Percent identity by BLAST analysis: Human, Chimpanzee, Gorilla, Monkey, Galago, Marmoset, Mouse, Dog, Platypus (100%), Rat, Horse, Pig, Opossum (92%), Orangutan, Gibbon, Rabbit, Guinea pig, Xenopus (85%), Bovine (83%). Type of Immunogen: Synthetic peptide
Specificity:	Human SNX32
Predicted Reactivity:	Percent identity by BLAST analysis:
Purification:	Immunoaffinity purified

Target Details

Target:	SNX32
Alternative Name:	SNX32 (SNX32 Products)
Background:	Name/Gene ID: SNX32 Synonyms: SNX32, Sorting nexin-6B, SNX6B, Sorting nexin 6B, Sorting nexin 32, Sorting nexin-32
Gene ID:	254122
NCBI Accession:	NP_689973
UniProt:	Q86XE0

Application Details

Application Notes:	Approved: WB (0.2 - 1 µg/mL) Usage: Western Blot: Suggested dilution at 1 µg/mL in 5 % skim milk / PBS buffer, and HRP conjugated anti-Rabbit IgG should be diluted in 1: 50,000 - 100,000 as secondary antibody.
Comment:	Target Species of Antibody: Human
Restrictions:	For Research Use only

Handling

Format:	Lyophilized
Reconstitution:	Distilled water
Concentration:	Lot specific
Buffer:	Lyophilized from PBS with 2 % sucrose
Handling Advice:	Avoid repeat freeze-thaw cycles.
Storage:	4 °C, -20 °C
Storage Comment:	Long term: -20°C, the use of 50% glycerol is recommended if storing aliquots in -20°C for long term use (up to 1 year) Short term (less than 1 week): 4°C. Avoid freeze-thaw cycles.

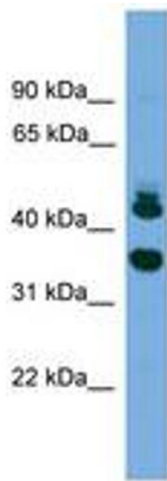


Image 1.