



[Go to Product page](#)

Datasheet for ABIN6745585
anti-ABHD1 antibody (AA 221-270)

1 Image

Overview

Quantity:	100 µL
Target:	ABHD1
Binding Specificity:	AA 221-270
Reactivity:	Human, Mouse, Rat, Cow, Pig
Host:	Rabbit
Clonality:	Polyclonal
Conjugate:	This ABHD1 antibody is un-conjugated
Application:	Western Blotting (WB)

Product Details

Immunogen:	Synthetic peptide located between aa221-270 of human ABHD1 (Q96SE0, NP_115993). Percent identity by BLAST analysis: Human, Gorilla, Gibbon, Mouse, Rat (100%), Monkey, Galago, Elephant, Panda, Dog, Bat, Rabbit, Horse, Guinea pig (92%), Marmoset, Bovine, Pig, Opossum (85%). Type of Immunogen: Synthetic peptide
Specificity:	Human ABHD1
Predicted Reactivity:	Percent identity by BLAST analysis: Human, Mouse, Rat (100%) Dog, Rabbit, Horse, Guinea pig (92%) Bovine, Pig (85%).
Purification:	Immunoaffinity purified

Target Details

Target: ABHD1

Alternative Name: ABHD1 ([ABHD1 Products](#))

Background: Name/Gene ID: ABHD1

Synonyms: ABHD1, Lung alpha/beta hydrolase 1, LABH1

Gene ID: 84696

NCBI Accession: [NP_115993](#)

UniProt: [Q96SE0](#)

Application Details

Application Notes: Approved: WB (0.2 - 1 µg/mL)

Usage: Western Blot: Suggested dilution at 1 µg/mL in 5 % skim milk / PBS buffer, and HRP conjugated anti-Rabbit IgG should be diluted in 1: 50,000 - 100,000 as secondary antibody.

Comment: Target Species of Antibody: Human

Restrictions: For Research Use only

Handling

Format: Lyophilized

Reconstitution: Distilled water

Concentration: Lot specific

Buffer: Lyophilized from PBS with 2 % sucrose

Handling Advice: Avoid repeat freeze-thaw cycles.

Storage: 4 °C, -20 °C

Storage Comment: Long term: -20°C, the use of 50% glycerol is recommended if storing aliquots in -20°C for long term use (up to 1 year)

Short term (less than 1 week): 4°C. Avoid freeze-thaw cycles.

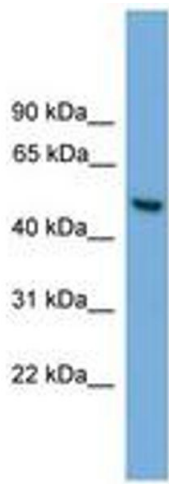


Image 1.