

Datasheet for ABIN6745595
anti-TMEM176A antibody (AA 35-84)



[Go to Product page](#)

1 Image

Overview

Quantity:	100 µL
Target:	TMEM176A
Binding Specificity:	AA 35-84
Reactivity:	Human
Host:	Rabbit
Clonality:	Polyclonal
Conjugate:	This TMEM176A antibody is un-conjugated
Application:	Western Blotting (WB)

Product Details

Immunogen: Synthetic peptide located between aa35-84 of human TMEM176A (Q96HP8, NP_060957).
Percent identity by BLAST analysis: Human, Gorilla, Gibbon (100%), Marmoset (92%).

Type of Immunogen: Synthetic peptide

Specificity: Human TMEM176A

Predicted Reactivity: Percent identity by BLAST analysis:

Purification: Immunoaffinity purified

Target Details

Target: TMEM176A

Alternative Name: TMEM176A / HCA112 ([TMEM176A Products](#))

Target Details

Background:	Name/Gene ID: TMEM176A Synonyms: TMEM176A, GS188, Likelly ortholog of mouse GS188, HCA112, Transmembrane protein 176A
Gene ID:	55365
NCBI Accession:	NP_060957
UniProt:	Q96HP8

Application Details

Application Notes:	Approved: WB (0.2 - 1 µg/mL) Usage: Western Blot: Suggested dilution at 1 µg/mL in 5 % skim milk / PBS buffer, and HRP conjugated anti-Rabbit IgG should be diluted in 1: 50,000 - 100,000 as secondary antibody.
Comment:	Target Species of Antibody: Human
Restrictions:	For Research Use only

Handling

Format:	Lyophilized
Reconstitution:	Distilled water
Concentration:	Lot specific
Buffer:	Lyophilized from PBS with 2 % sucrose
Handling Advice:	Avoid repeat freeze-thaw cycles.
Storage:	4 °C, -20 °C
Storage Comment:	Long term: -20°C, the use of 50% glycerol is recommended if storing aliquots in -20°C for long term use (up to 1 year) Short term (less than 1 week): 4°C. Avoid freeze-thaw cycles.

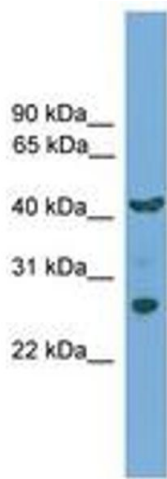


Image 1.