

Datasheet for ABIN6745600
anti-SOAT1 antibody (AA 251-300)[Go to Product page](#)

1 Image

Overview

Quantity:	100 µL
Target:	SOAT1
Binding Specificity:	AA 251-300
Reactivity:	Human, Rat, Mouse, Cow, Dog, Rabbit, Monkey
Host:	Rabbit
Clonality:	Polyclonal
Conjugate:	This SOAT1 antibody is un-conjugated
Application:	Western Blotting (WB)

Product Details

Immunogen:	Synthetic peptide located between aa251-300 of human SOAT1 (P35610, NP_003092). Percent identity by BLAST analysis: Human, Chimpanzee, Gorilla, Gibbon, Monkey, Galago, Marmoset, Panda, Dog, Bovine, Rabbit (100%), Orangutan, Hamster, Elephant, Horse, Guinea pig (92%), Mouse, Rat, Opossum, Chicken, Platypus (85%). Type of Immunogen: Synthetic peptide
Specificity:	Human SOAT1 / STAT
Predicted Reactivity:	Percent identity by BLAST analysis: Human, Dog, Bovine (100%) Horse, Guinea pig (92%) Mouse, Rat, Chicken (85%).
Purification:	Immunoaffinity purified

Target Details

Target:	SOAT1
Alternative Name:	SOAT1 / STAT (SOAT1 Products)
Background:	Name/Gene ID: SOAT1 Synonyms: SOAT1, ACACT1, ACACT, ACAT-1, ACAT, Cholesterol acyltransferase 1, SOAT, STAT, Sterol o-acyltransferase, Sterol O-acyltransferase 1
Gene ID:	6646
NCBI Accession:	NP_003092
UniProt:	P35610

Application Details

Application Notes:	Approved: WB (0.2 - 1 µg/mL) Usage: Western Blot: Suggested dilution at 1 µg/mL in 5 % skim milk / PBS buffer, and HRP conjugated anti-Rabbit IgG should be diluted in 1: 50,000 - 100,000 as secondary antibody.
Comment:	Target Species of Antibody: Human
Restrictions:	For Research Use only

Handling

Format:	Lyophilized
Reconstitution:	Distilled water
Concentration:	Lot specific
Buffer:	Lyophilized from PBS with 2 % sucrose
Handling Advice:	Avoid repeat freeze-thaw cycles.
Storage:	4 °C, -20 °C
Storage Comment:	Long term: -20°C, the use of 50% glycerol is recommended if storing aliquots in -20°C for long term use (up to 1 year) Short term (less than 1 week): 4°C. Avoid freeze-thaw cycles.

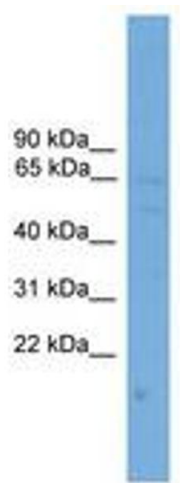


Image 1.