



[Go to Product page](#)

Datasheet for ABIN6745604
anti-CDCA4 antibody (AA 143-192)

1 Image

Overview

Quantity:	100 µL
Target:	CDCA4
Binding Specificity:	AA 143-192
Reactivity:	Human, Monkey
Host:	Rabbit
Clonality:	Polyclonal
Conjugate:	This CDCA4 antibody is un-conjugated
Application:	Western Blotting (WB)

Product Details

Immunogen:	Synthetic peptide located between aa143-192 of human CDCA4 (Q9BXL8, NP_060425). Percent identity by BLAST analysis: Human, Chimpanzee, Gorilla, Gibbon, Marmoset (100%), Mouse, Rat, Hamster, Bovine, Horse (92%), Panda, Stickleback (85%). Type of Immunogen: Synthetic peptide
Specificity:	Human CDCA4
Predicted Reactivity:	Percent identity by BLAST analysis: Human (100%) Mouse, Rat, Bovine (92%).
Purification:	Immunoaffinity purified

Target Details

Target:	CDCA4
---------	-------

Target Details

Alternative Name:	CDCA4 (CDCA4 Products)
Background:	Name/Gene ID: CDCA4 Synonyms: CDCA4, HEPP, SEI-3/HEPP
Gene ID:	55038
NCBI Accession:	NP_060425
UniProt:	Q9BXL8

Application Details

Application Notes:	Approved: WB (0.2 - 1 µg/mL) Usage: Western Blot: Suggested dilution at 1 µg/mL in 5 % skim milk / PBS buffer, and HRP conjugated anti-Rabbit IgG should be diluted in 1: 50,000 - 100,000 as secondary antibody.
Comment:	Target Species of Antibody: Human
Restrictions:	For Research Use only

Handling

Format:	Lyophilized
Reconstitution:	Distilled water
Concentration:	Lot specific
Buffer:	Lyophilized from PBS with 2 % sucrose
Handling Advice:	Avoid repeat freeze-thaw cycles.
Storage:	4 °C,-20 °C
Storage Comment:	Long term: -20°C, the use of 50% glycerol is recommended if storing aliquots in -20°C for long term use (up to 1 year) Short term (less than 1 week): 4°C. Avoid freeze-thaw cycles.

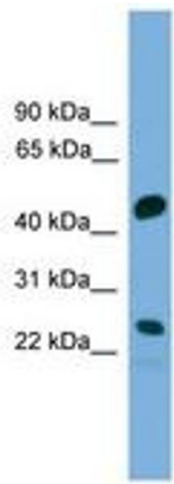


Image 1.