

Datasheet for ABIN6745609
anti-SEC23IP antibody (AA 35-84)[Go to Product page](#)

1 Image

Overview

Quantity:	100 µL
Target:	SEC23IP
Binding Specificity:	AA 35-84
Reactivity:	Human, Mouse, Rat, Dog, Horse, Cow, Rabbit, Bat, Monkey
Host:	Rabbit
Clonality:	Polyclonal
Conjugate:	This SEC23IP antibody is un-conjugated
Application:	Western Blotting (WB)

Product Details

Immunogen:	Synthetic peptide located between aa35-84 of human SEC23IP (Q9Y6Y8, NP_009121). Percent identity by BLAST analysis: Human, Chimpanzee, Gorilla, Orangutan, Gibbon, Monkey, Galago, Marmoset, Mouse, Rat, Elephant, Panda, Dog, Bovine, Bat, Horse, Platypus (100%), Guinea pig (93%), Pig, Opossum (92%), Rabbit, Smelt, Stickleback (85%). Type of Immunogen: Synthetic peptide
Specificity:	Human SEC23IP
Predicted Reactivity:	Percent identity by BLAST analysis: Mouse, Rat, Dog, Bovine, Horse (100%) Guinea pig (93%) Pig (92%) Rabbit (85%).
Purification:	Immunoaffinity purified

Target Details

Target:	SEC23IP
Alternative Name:	SEC23IP / p125 (SEC23IP Products)
Background:	Name/Gene ID: SEC23IP Synonyms: SEC23IP, p125A, SEC23 interacting protein, SEC23-interacting protein, p125, MSTP053
Gene ID:	11196
NCBI Accession:	NP_009121
UniProt:	Q9Y6Y8

Application Details

Application Notes:	Approved: WB (0.2 - 1 µg/mL) Usage: Western Blot: Suggested dilution at 1 µg/mL in 5 % skim milk / PBS buffer, and HRP conjugated anti-Rabbit IgG should be diluted in 1: 50,000 - 100,000 as secondary antibody.
Comment:	Target Species of Antibody: Human
Restrictions:	For Research Use only

Handling

Format:	Lyophilized
Reconstitution:	Distilled water
Concentration:	Lot specific
Buffer:	Lyophilized from PBS with 2 % sucrose
Handling Advice:	Avoid repeat freeze-thaw cycles.
Storage:	4 °C, -20 °C
Storage Comment:	Long term: -20°C, the use of 50% glycerol is recommended if storing aliquots in -20°C for long term use (up to 1 year) Short term (less than 1 week): 4°C. Avoid freeze-thaw cycles.

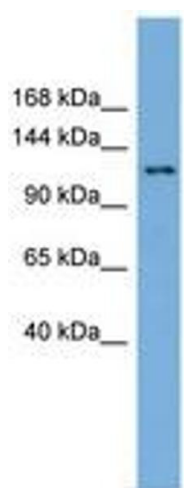


Image 1.