



Datasheet for ABIN6745617
anti-DEPDC1 antibody (AA 287-336)



[Go to Product page](#)

1 Image

Overview

Quantity:	100 µL
Target:	DEPDC1
Binding Specificity:	AA 287-336
Reactivity:	Human, Rat, Cow, Guinea Pig
Host:	Rabbit
Clonality:	Polyclonal
Conjugate:	This DEPDC1 antibody is un-conjugated
Application:	Western Blotting (WB)

Product Details

Immunogen:	Synthetic peptide located between aa287-336 of human DEPDC1 (Q5TB30, NP_001107592). Percent identity by BLAST analysis: Human, Chimpanzee, Gorilla, Gibbon (100%), Monkey, Marmoset, Mouse, Panda, Dog, Horse (92%), Elephant, Bovine, Bat, Guinea pig (85%), Rat (84%). Type of Immunogen: Synthetic peptide
Specificity:	Human DEPDC1
Predicted Reactivity:	Percent identity by BLAST analysis: Human (100%) Mouse, Dog, Horse (92%) Bovine, Guinea pig (85%) Rat (84%).
Purification:	Immunoaffinity purified

Target Details

Target:	DEPDC1
Alternative Name:	DEPDC1 (DEPDC1 Products)
Background:	Name/Gene ID: DEPDC1 Synonyms: DEPDC1, DEP domain containing 1, DEPDC1A, DEP.8, SDP35, DEPDC1-V2
Gene ID:	55635
NCBI Accession:	NP_001107592
UniProt:	Q5TB30

Application Details

Application Notes:	Approved: WB (0.2 - 1 µg/mL) Usage: Western Blot: Suggested dilution at 1 µg/mL in 5 % skim milk / PBS buffer, and HRP conjugated anti-Rabbit IgG should be diluted in 1: 50,000 - 100,000 as secondary antibody.
Comment:	Target Species of Antibody: Human
Restrictions:	For Research Use only

Handling

Format:	Lyophilized
Reconstitution:	Distilled water
Concentration:	Lot specific
Buffer:	Lyophilized from PBS with 2 % sucrose
Handling Advice:	Avoid repeat freeze-thaw cycles.
Storage:	4 °C, -20 °C
Storage Comment:	Long term: -20°C, the use of 50% glycerol is recommended if storing aliquots in -20°C for long term use (up to 1 year) Short term (less than 1 week): 4°C. Avoid freeze-thaw cycles.

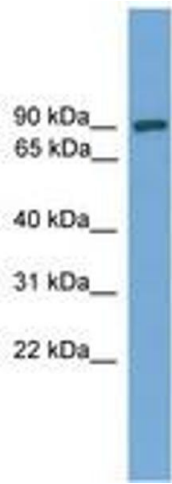


Image 1.