

Datasheet for ABIN6745620
anti-PHYH antibody (AA 35-84)[Go to Product page](#)

1 Image

Overview

| | |
|----------------------|---|
| Quantity: | 100 µL |
| Target: | PHYH |
| Binding Specificity: | AA 35-84 |
| Reactivity: | Human, Rat, Horse, Zebrafish (Danio rerio), Cow, Dog, Bat |
| Host: | Rabbit |
| Clonality: | Polyclonal |
| Conjugate: | This PHYH antibody is un-conjugated |
| Application: | Western Blotting (WB) |

Product Details

| | |
|-----------------------|--|
| Immunogen: | Synthetic peptide located between aa35-84 of human PHYH (O14832, NP_001032626). Percent identity by BLAST analysis: Human, Chimpanzee, Gorilla, Orangutan, Gibbon, Baboon, Monkey, Rat, Dog, Bovine, Bat, Horse, Opossum (100%), Marmoset, Mouse, Hamster, Elephant, Rabbit, Pig, Platypus (92%), Guinea pig, Lizard, Smelt, Stickleback, Zebrafish (85%). Type of Immunogen: Synthetic peptide |
| Specificity: | Human PHYH |
| Predicted Reactivity: | Percent identity by BLAST analysis: Human (100%) Mouse, Pig (92%) Zebrafish (85%). |
| Purification: | Immunoaffinity purified |

Target Details

| | |
|-------------------|--|
| Target: | PHYH |
| Alternative Name: | RD / PHYH (PHYH Products) |
| Background: | Name/Gene ID: PHYH Synonyms: PHYH, LN1, LNAP1, PHYH1, Phytanoyl-CoA 2-hydroxylase, Phytanoyl-CoA hydroxylase, RD, PAHX, Phytanic acid oxidase |
| Gene ID: | 5264 |
| NCBI Accession: | NP_001032626 |
| UniProt: | O14832 |
| Pathways: | Monocarboxylic Acid Catabolic Process |

Application Details

| | |
|--------------------|--|
| Application Notes: | Approved: WB (0.2 - 1 µg/mL) Usage: Western Blot: Suggested dilution at 1 µg/mL in 5 % skim milk / PBS buffer, and HRP conjugated anti-Rabbit IgG should be diluted in 1: 50,000 - 100,000 as secondary antibody. |
| Comment: | Target Species of Antibody: Human |
| Restrictions: | For Research Use only |

Handling

| | |
|------------------|---|
| Format: | Lyophilized |
| Reconstitution: | Distilled water |
| Concentration: | Lot specific |
| Buffer: | Lyophilized from PBS with 2 % sucrose |
| Handling Advice: | Avoid repeat freeze-thaw cycles. |
| Storage: | 4 °C,-20 °C |
| Storage Comment: | Long term: -20°C, the use of 50% glycerol is recommended if storing aliquots in -20°C for long term use (up to 1 year) Short term (less than 1 week): 4°C. Avoid freeze-thaw cycles. |

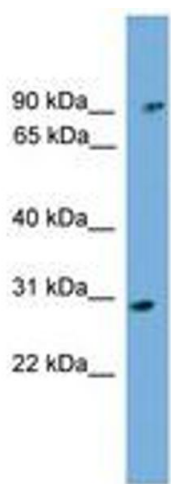


Image 1.