



[Go to Product page](#)

Datasheet for ABIN6745623  
**anti-BIN2 antibody (AA 359-408)**

1 Image

Overview

Quantity:	100 µL
Target:	BIN2
Binding Specificity:	AA 359-408
Reactivity:	Human, Rabbit, Cow, Pig
Host:	Rabbit
Clonality:	Polyclonal
Conjugate:	This BIN2 antibody is un-conjugated
Application:	Western Blotting (WB)

Product Details

Immunogen:	Synthetic peptide located between aa359-408 of human BIN2 (Q9UBW5, NP_057377). Percent identity by BLAST analysis: Human, Gorilla, Gibbon, Rabbit (100%), Marmoset, Dog, Horse (92%), Elephant (86%), Pig (85%).  Type of Immunogen: Synthetic peptide
Specificity:	Human BIN2
Predicted Reactivity:	Percent identity by BLAST analysis: Human (100%) Dog, Horse (92%) Pig (85%).
Purification:	Immunoaffinity purified

Target Details

Target:	BIN2
---------	------

## Target Details

---

Alternative Name: [BIN2 \(BIN2 Products\)](#)

Background: Name/Gene ID: BIN2

Synonyms: BIN2, BRAP1, BRAP-1, Bridging integrator 2, Bridging integrator-2

Gene ID: 51411

NCBI Accession: [NP\\_057377](#)

UniProt: [Q9UBW5](#)

## Application Details

---

Application Notes: Approved: WB (0.2 - 1 µg/mL)

Usage: Western Blot: Suggested dilution at 1 µg/mL in 5 % skim milk / PBS buffer, and HRP conjugated anti-Rabbit IgG should be diluted in 1: 50,000 - 100,000 as secondary antibody.

Comment: Target Species of Antibody: Human

Restrictions: For Research Use only

## Handling

---

Format: Lyophilized

Reconstitution: Distilled water

Concentration: Lot specific

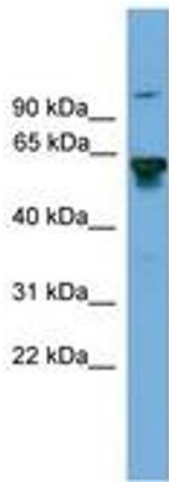
Buffer: Lyophilized from PBS with 2 % sucrose

Handling Advice: Avoid repeat freeze-thaw cycles.

Storage: 4 °C, -20 °C

Storage Comment: Long term: -20°C, the use of 50% glycerol is recommended if storing aliquots in -20°C for long term use (up to 1 year)

Short term (less than 1 week): 4°C. Avoid freeze-thaw cycles.



**Image 1.**