



[Go to Product page](#)

Datasheet for ABIN6745624
anti-TTC27 antibody (AA 251-300)

1 Image

Overview

Quantity:	100 µL
Target:	TTC27
Binding Specificity:	AA 251-300
Reactivity:	Human, Mouse, Rat, Cow, Dog, Guinea Pig, Horse, Rabbit, Bat, Monkey, Pig, Xenopus laevis
Host:	Rabbit
Clonality:	Polyclonal
Conjugate:	This TTC27 antibody is un-conjugated
Application:	Western Blotting (WB)

Product Details

Immunogen:	Synthetic peptide located between aa251-300 of human TTC27 (Q6P3X3, NP_060205). Percent identity by BLAST analysis: Human, Chimpanzee, Gorilla, Orangutan, Gibbon, Monkey, Galago, Marmoset, Mouse, Rat, Elephant, Panda, Bovine, Bat, Rabbit, Horse, Pig, Guinea pig, Platypus, Xenopus, Slime mold (100%), Opossum, Turkey, Chicken, Lizard, Zebrafish (92%), Dog (85%). Type of Immunogen: Synthetic peptide
Specificity:	Human TTC27
Predicted Reactivity:	Percent identity by BLAST analysis: Human, Mouse, Rat, Bovine, Rabbit, Horse, Pig (100%) Chicken, Zebrafish (92%) Dog (85%).
Purification:	Immunoaffinity purified

Target Details

Target:	TTC27
Alternative Name:	TTC27 (TTC27 Products)
Background:	Name/Gene ID: TTC27 Synonyms: TTC27, TPR repeat protein 27
Gene ID:	55622
NCBI Accession:	NP_060205
UniProt:	Q6P3X3

Application Details

Application Notes:	Approved: WB (0.2 - 1 µg/mL) Usage: Western Blot: Suggested dilution at 1 µg/mL in 5 % skim milk / PBS buffer, and HRP conjugated anti-Rabbit IgG should be diluted in 1: 50,000 - 100,000 as secondary antibody.
Comment:	Target Species of Antibody: Human
Restrictions:	For Research Use only

Handling

Format:	Lyophilized
Reconstitution:	Distilled water
Concentration:	Lot specific
Buffer:	Lyophilized from PBS with 2 % sucrose
Handling Advice:	Avoid repeat freeze-thaw cycles.
Storage:	4 °C, -20 °C
Storage Comment:	Long term: -20°C, the use of 50% glycerol is recommended if storing aliquots in -20°C for long term use (up to 1 year) Short term (less than 1 week): 4°C. Avoid freeze-thaw cycles.

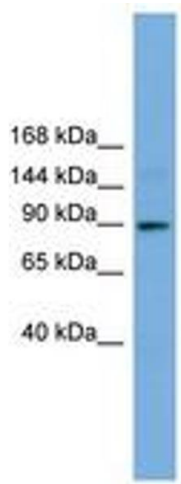


Image 1.