



[Go to Product page](#)

Datasheet for ABIN6745628
anti-CNDP2 antibody (AA 395-444)

1 Image

Overview

Quantity:	100 µL
Target:	CNDP2
Binding Specificity:	AA 395-444
Reactivity:	Human, Mouse, Rat, Horse, Cow, Rabbit, Dog, Guinea Pig, Zebrafish (Danio rerio), Pig, Hamster, Bat, Chicken, Xenopus laevis
Host:	Rabbit
Clonality:	Polyclonal
Conjugate:	This CNDP2 antibody is un-conjugated
Application:	Western Blotting (WB)

Product Details

Immunogen:	Synthetic peptide located between aa395-444 of human CNDP2 (Q96KP4, NP_060705). Percent identity by BLAST analysis: Human, Chimpanzee, Gorilla, Orangutan, Gibbon, Galago, Marmoset, Mouse, Rat, Hamster, Elephant, Dog, Bovine, Bat, Rabbit, Horse, Pig, Opossum, Guinea pig, Turkey, Chicken, Platypus, Lizard, Xenopus, Stickleback, Zebrafish (100%), Monkey, Drosophila, Beetle (92%). Type of Immunogen: Synthetic peptide
Specificity:	Human CNDP2
Predicted Reactivity:	Percent identity by BLAST analysis: Human, Mouse, Rat, Dog, Bovine, Rabbit, Horse, Pig, Guinea pig, Chicken, Xenopus, Zebrafish (100%).

Product Details

Purification: Immunoaffinity purified

Target Details

Target: CNDP2

Alternative Name: CNDP2 ([CNDP2 Products](#))

Background: Name/Gene ID: CNDP2
Subfamily: Metallopeptidase M20
Family: Protease

Synonyms: CNDP2, CN2, CPGL, CNDP dipeptidase 2, HsT2298, PEPA, Peptidase A

Gene ID: 55748

NCBI Accession: [NP_060705](#)

Application Details

Application Notes: Approved: WB (0.2 - 1 µg/mL)

Usage: Western Blot: Suggested dilution at 1 µg/mL in 5 % skim milk / PBS buffer, and HRP conjugated anti-Rabbit IgG should be diluted in 1: 50,000 - 100,000 as secondary antibody.

Comment: Target Species of Antibody: Human

Restrictions: For Research Use only

Handling

Format: Lyophilized

Reconstitution: Distilled water

Concentration: Lot specific

Buffer: Lyophilized from PBS with 2 % sucrose

Handling Advice: Avoid repeat freeze-thaw cycles.

Storage: 4 °C, -20 °C

Storage Comment: Long term: -20°C, the use of 50% glycerol is recommended if storing aliquots in -20°C for long term use (up to 1 year)

Handling

Short term (less than 1 week): 4°C. Avoid freeze-thaw cycles.

Images

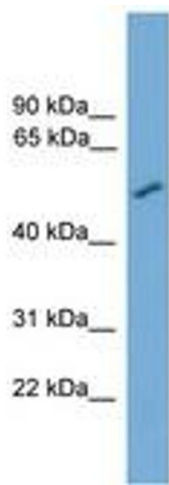


Image 1.