



[Go to Product page](#)

Datasheet for ABIN6745637  
**anti-LUM antibody (AA 179-228)**

1 Image

Overview

Quantity:	100 µL
Target:	LUM
Binding Specificity:	AA 179-228
Reactivity:	Human, Mouse, Rat, Dog, Horse, Cow, Monkey, Bat
Host:	Rabbit
Clonality:	Polyclonal
Conjugate:	This LUM antibody is un-conjugated
Application:	Western Blotting (WB)

Product Details

Immunogen:	Synthetic peptide located between aa179-228 of human LUM (P51884, NP_002336). Percent identity by BLAST analysis: Human, Gorilla, Orangutan, Gibbon, Monkey, Marmoset, Mouse, Elephant, Panda, Dog, Bovine, Bat, Horse (100%), Galago, Rabbit, Pig, Opossum, Platypus (92%), Turkey, Chicken, Xenopus (90%), Rat (85%), Zebra finch, Lizard (81%).  Type of Immunogen: Synthetic peptide
Specificity:	Human LUM / Lumican
Predicted Reactivity:	Percent identity by BLAST analysis: Human, Mouse, Dog, Bovine, Horse (100%) Rabbit, Pig (92%) Chicken, Xenopus (90%) Rat (85%).
Purification:	Immunoaffinity purified

## Target Details

---

Target:	LUM
Alternative Name:	Lumican ( <a href="#">LUM Products</a> )
Background:	Name/Gene ID: LUM  Synonyms: LUM, LDC, Lumican, KSPG lumican, Lumican proteoglycan, SLRR2D
Gene ID:	4060
NCBI Accession:	<a href="#">NP_002336</a>
UniProt:	<a href="#">P51884</a>
Pathways:	<a href="#">Glycosaminoglycan Metabolic Process</a>

## Application Details

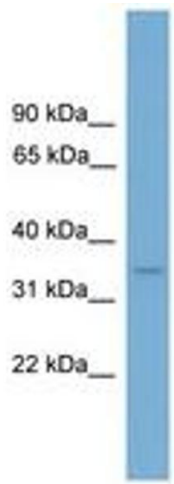
---

Application Notes:	Approved: WB (0.2 - 1 µg/mL)  Usage: Western Blot: Suggested dilution at 1 µg/mL in 5 % skim milk / PBS buffer, and HRP conjugated anti-Rabbit IgG should be diluted in 1: 50,000 - 100,000 as secondary antibody.
Comment:	Target Species of Antibody: Human
Restrictions:	For Research Use only

## Handling

---

Format:	Lyophilized
Reconstitution:	Distilled water
Concentration:	Lot specific
Buffer:	Lyophilized from PBS with 2 % sucrose
Handling Advice:	Avoid repeat freeze-thaw cycles.
Storage:	4 °C,-20 °C
Storage Comment:	Long term: -20°C, the use of 50% glycerol is recommended if storing aliquots in -20°C for long term use (up to 1 year)  Short term (less than 1 week): 4°C. Avoid freeze-thaw cycles.



**Image 1.**