



[Go to Product page](#)

Datasheet for ABIN6745639
anti-CADM3 antibody (AA 179-228)

1 Image

Overview

Quantity:	100 µL
Target:	CADM3
Binding Specificity:	AA 179-228
Reactivity:	Human, Mouse, Rat, Cow, Guinea Pig, Rabbit, Monkey
Host:	Rabbit
Clonality:	Polyclonal
Conjugate:	This CADM3 antibody is un-conjugated
Application:	Western Blotting (WB)

Product Details

Immunogen:	Synthetic peptide located between aa179-228 of human CADM3 (Q8N126, NP_067012). Percent identity by BLAST analysis: Human, Chimpanzee, Gorilla, Gibbon, Monkey, Galago, Marmoset, Mouse, Rat, Bovine, Rabbit, Guinea pig (100%), Elephant, Panda, Dog, Bat, Horse, Pig (92%). Type of Immunogen: Synthetic peptide
Specificity:	Human CADM3
Predicted Reactivity:	Percent identity by BLAST analysis: Human, Mouse, Rat, Bovine, Rabbit, Guinea pig (100%) Dog, Horse, Pig (92%).
Purification:	Immunoaffinity purified

Target Details

Target:	CADM3
Alternative Name:	NECL-1 / CADM3 (CADM3 Products)
Background:	Name/Gene ID: CADM3 Family: CEA Synonyms: CADM3, Brain immunoglobulin receptor, Cell adhesion molecule 3, BlgR, Nectin-like 1, IGSF4B, SynCAM3, TSLC1-like protein 1, NECL1, Nectin-like protein 1, TSLL1, Necl-1, TSLC1-like 1
Gene ID:	57863
NCBI Accession:	NP_067012
UniProt:	Q8N126
Pathways:	Cell-Cell Junction Organization

Application Details

Application Notes:	Approved: WB (0.2 - 1 µg/mL) Usage: Western Blot: Suggested dilution at 1 µg/mL in 5 % skim milk / PBS buffer, and HRP conjugated anti-Rabbit IgG should be diluted in 1: 50,000 - 100,000 as secondary antibody.
Comment:	Target Species of Antibody: Human
Restrictions:	For Research Use only

Handling

Format:	Lyophilized
Reconstitution:	Distilled water
Concentration:	Lot specific
Buffer:	Lyophilized from PBS with 2 % sucrose
Handling Advice:	Avoid repeat freeze-thaw cycles.
Storage:	4 °C, -20 °C
Storage Comment:	Long term: -20°C, the use of 50% glycerol is recommended if storing aliquots in -20°C for long term use (up to 1 year)

Handling

Short term (less than 1 week): 4°C. Avoid freeze-thaw cycles.

Images

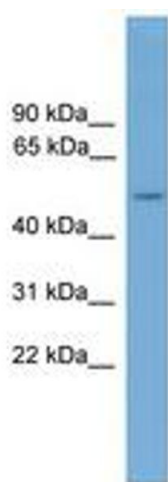


Image 1.