



Datasheet for ABIN6745644
anti-TAF1C antibody (AA 701-750)



[Go to Product page](#)

1 Image

Overview

Quantity:	100 µL
Target:	TAF1C
Binding Specificity:	AA 701-750
Reactivity:	Mouse
Host:	Rabbit
Clonality:	Polyclonal
Conjugate:	This TAF1C antibody is un-conjugated
Application:	Western Blotting (WB)

Product Details

Immunogen:	Synthetic peptide located between aa701-750 of mouse Taf1c (Q6PDZ2, NP_067416). Percent identity by BLAST analysis: Mouse (100%), Rat (92%). Type of Immunogen: Synthetic peptide
Specificity:	Mouse TAF1C
Predicted Reactivity:	Percent identity by BLAST analysis: Mouse (100%) Rat (92%).
Purification:	Immunoaffinity purified

Target Details

Target:	TAF1C
Alternative Name:	TAF1C (TAF1C Products)

Target Details

Background: Name/Gene ID: TAF1C

Synonyms: TAF1C, MGC:39976, SL1, 110kD subunit, TBP-associated factor 1C, TAFI110, Transcription factor SL1, SL1, TAFI95

Gene ID: 9013

NCBI Accession: [NP_067416](#)

UniProt: [Q15572](#)

Application Details

Application Notes: Approved: WB (0.2 - 1 µg/mL)

Usage: Western Blot: Suggested dilution at 1 µg/mL in 5 % skim milk / PBS buffer, and HRP conjugated anti-Rabbit IgG should be diluted in 1: 50,000 - 100,000 as secondary antibody.

Comment: Target Species of Antibody: Mouse

Restrictions: For Research Use only

Handling

Format: Lyophilized

Reconstitution: Distilled water

Concentration: Lot specific

Buffer: Lyophilized from PBS with 2 % sucrose

Handling Advice: Avoid repeat freeze-thaw cycles.

Storage: 4 °C, -20 °C

Storage Comment: Long term: -20°C, the use of 50% glycerol is recommended if storing aliquots in -20°C for long term use (up to 1 year)

Short term (less than 1 week): 4°C. Avoid freeze-thaw cycles.

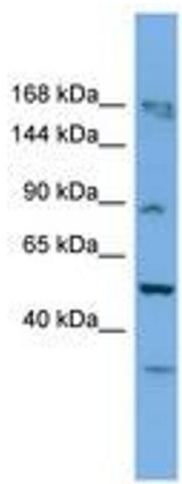


Image 1.