



## Datasheet for ABIN6745649 **anti-GLOD4 antibody (AA 35-84)**



[Go to Product page](#)

### 1 Image

#### Overview

Quantity:	100 µL
Target:	GLOD4
Binding Specificity:	AA 35-84
Reactivity:	Human, Mouse, Rat, Rabbit, Dog, Horse, Pig, Zebrafish (Danio rerio), Monkey, Bat, Hamster
Host:	Rabbit
Clonality:	Polyclonal
Conjugate:	This GLOD4 antibody is un-conjugated
Application:	Western Blotting (WB)

#### Product Details

Immunogen:	Synthetic peptide located between aa35-84 of human GLOD4 (D3DTG9, NP_057164). Percent identity by BLAST analysis: Human, Chimpanzee, Gorilla, Gibbon, Monkey, Marmoset, Mouse, Rat, Hamster, Panda, Dog, Bat, Rabbit, Horse, Pig, Turkey, Catfish, Salmon, Stickleback, Zebrafish (100%), Galago, Elephant, Bovine, Opossum, Zebra finch, Chicken, Platypus (92%), Drosophila, Rice, Grape, Arabidopsis (85%), Sea squirt (83%).  Type of Immunogen: Synthetic peptide
Specificity:	Human GLOD4
Predicted Reactivity:	Percent identity by BLAST analysis: Human, Mouse, Rat, Dog, Horse, Zebrafish (100%) Bovine (92%).
Purification:	Immunoaffinity purified

## Target Details

---

Target:	GLOD4
Alternative Name:	HC71 / GLOD4 ( <a href="#">GLOD4 Products</a> )
Background:	Name/Gene ID: GLOD4  Synonyms: GLOD4, CGI-150, C17orf25, Glyoxalase domain containing 4, HC71
Gene ID:	51031
NCBI Accession:	<a href="#">NP_057164</a>
UniProt:	<a href="#">Q9HC38</a>

## Application Details

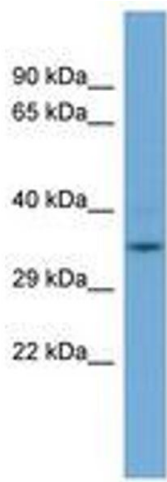
---

Application Notes:	Approved: WB (0.2 - 1 µg/mL)  Usage: Western Blot: Suggested dilution at 1 µg/mL in 5 % skim milk / PBS buffer, and HRP conjugated anti-Rabbit IgG should be diluted in 1: 50,000 - 100,000 as secondary antibody.
Comment:	Target Species of Antibody: Human
Restrictions:	For Research Use only

## Handling

---

Format:	Lyophilized
Reconstitution:	Distilled water
Concentration:	Lot specific
Buffer:	Lyophilized from PBS with 2 % sucrose
Handling Advice:	Avoid repeat freeze-thaw cycles.
Storage:	4 °C, -20 °C
Storage Comment:	Long term: -20°C, the use of 50% glycerol is recommended if storing aliquots in -20°C for long term use (up to 1 year)  Short term (less than 1 week): 4°C. Avoid freeze-thaw cycles.



**Image 1.**