



[Go to Product page](#)

Datasheet for ABIN6745650
anti-MIER2 antibody (C-Term)

1 Image

Overview

Quantity:	100 µL
Target:	MIER2
Binding Specificity:	C-Term
Reactivity:	Human, Mouse, Rat, Cow, Dog, Guinea Pig, Rabbit, Bat, Monkey, Pig
Host:	Rabbit
Clonality:	Polyclonal
Conjugate:	This MIER2 antibody is un-conjugated
Application:	Western Blotting (WB)

Product Details

Immunogen:	Synthetic peptide from C-Terminus of human MIER2 (Q8N344, NP_060020). Percent identity by BLAST analysis: Human, Chimpanzee, Gorilla, Gibbon, Monkey, Galago, Mouse, Rat, Dog, Bovine, Bat, Rabbit, Pig, Guinea pig (100%), Marmoset, Opossum, Turkey, Zebra finch, Chicken (85%). Type of Immunogen: Synthetic peptide
Specificity:	Human MIER2
Predicted Reactivity:	Percent identity by BLAST analysis: Human, Mouse, Rat, Dog, Bovine, Rabbit, Pig, Guinea pig (100%) Chicken (85%).
Purification:	Immunoaffinity purified

Target Details

Target:	MIER2
Alternative Name:	MIER2 (MIER2 Products)
Background:	Name/Gene ID: MIER2 Synonyms: MIER2, KIAA1193, Mi-er2
Gene ID:	54531
NCBI Accession:	NP_060020
UniProt:	Q8N344
Pathways:	Chromatin Binding

Application Details

Application Notes:	Approved: WB (0.2 - 1 µg/mL) Usage: Western Blot: Suggested dilution at 1 µg/mL in 5 % skim milk / PBS buffer, and HRP conjugated anti-Rabbit IgG should be diluted in 1: 50,000 - 100,000 as secondary antibody.
Comment:	Target Species of Antibody: Human
Restrictions:	For Research Use only

Handling

Format:	Lyophilized
Reconstitution:	Distilled water
Concentration:	Lot specific
Buffer:	Lyophilized from PBS with 2 % sucrose
Handling Advice:	Avoid repeat freeze-thaw cycles.
Storage:	4 °C,-20 °C
Storage Comment:	Long term: -20°C, the use of 50% glycerol is recommended if storing aliquots in -20°C for long term use (up to 1 year) Short term (less than 1 week): 4°C. Avoid freeze-thaw cycles.

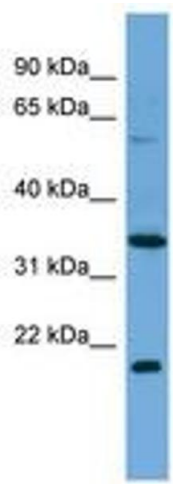


Image 1.