



[Go to Product page](#)

Datasheet for ABIN6745654  
**anti-C14orf126 antibody (AA 71-120)**

1 Image

Overview

Quantity:	100 µL
Target:	C14orf126
Binding Specificity:	AA 71-120
Reactivity:	Human
Host:	Rabbit
Clonality:	Polyclonal
Conjugate:	This C14orf126 antibody is un-conjugated
Application:	Western Blotting (WB)

Product Details

Immunogen:	Synthetic peptide located between aa71-120 of human DTD2 (Q96FN9, NP_542395). Percent identity by BLAST analysis: Human, Chimpanzee, Gorilla, Gibbon, Marmoset (100%), Monkey, Mouse, Rat, Hamster, Panda, Dog, Rabbit, Pig, Guinea pig (92%), Platypus (90%), Bovine, Horse (85%).  Type of Immunogen: Synthetic peptide
Specificity:	Human C14orf126
Predicted Reactivity:	Percent identity by BLAST analysis: Pig (92%).
Purification:	Immunoaffinity purified

## Target Details

---

Target:	C14orf126
Alternative Name:	C14orf126 ( <a href="#">C14orf126 Products</a> )
Background:	Name/Gene ID: DTD2  Synonyms: DTD2, C14orf126
Gene ID:	112487
NCBI Accession:	<a href="#">NP_542395</a>
UniProt:	<a href="#">Q96FN9</a>

## Application Details

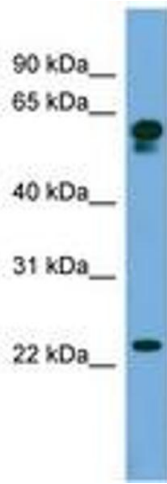
---

Application Notes:	Approved: WB (0.2 - 1 µg/mL)  Usage: Western Blot: Suggested dilution at 1 µg/mL in 5 % skim milk / PBS buffer, and HRP conjugated anti-Rabbit IgG should be diluted in 1: 50,000 - 100,000 as secondary antibody.
Comment:	Target Species of Antibody: Human
Restrictions:	For Research Use only

## Handling

---

Format:	Lyophilized
Reconstitution:	Distilled water
Concentration:	Lot specific
Buffer:	Lyophilized from PBS with 2 % sucrose
Handling Advice:	Avoid repeat freeze-thaw cycles.
Storage:	4 °C, -20 °C
Storage Comment:	Long term: -20°C, the use of 50% glycerol is recommended if storing aliquots in -20°C for long term use (up to 1 year)  Short term (less than 1 week): 4°C. Avoid freeze-thaw cycles.



**Image 1.**