



[Go to Product page](#)

Datasheet for ABIN6745667
anti-PNMA2 antibody (C-Term)

1 Image

Overview

Quantity:	100 µL
Target:	PNMA2
Binding Specificity:	C-Term
Reactivity:	Human, Horse
Host:	Rabbit
Clonality:	Polyclonal
Conjugate:	This PNMA2 antibody is un-conjugated
Application:	Western Blotting (WB)

Product Details

Immunogen:	Synthetic peptide from C-Terminus of human PNMA2 (Q9UL42, NP_009188). Percent identity by BLAST analysis: Human, Gorilla (100%), Orangutan, Gibbon, Monkey (92%), Galago (90%). Type of Immunogen: Synthetic peptide
Specificity:	Human PNMA2 / MA2
Predicted Reactivity:	Percent identity by BLAST analysis: Human (100%).
Purification:	Immunoaffinity purified

Target Details

Target:	PNMA2
Alternative Name:	PNMA2 / MA2 (PNMA2 Products)

Target Details

Background:	Name/Gene ID: PNMA2 Synonyms: PNMA2, 40 kDa neuronal protein, Onconeuroal antigen Ma2, Paraneoplastic antigen Ma2, RGAG2, MM2, KIAA0883, MA2, Paraneoplastic Ma antigen 2
Gene ID:	10687
NCBI Accession:	NP_009188
UniProt:	Q9UL42

Application Details

Application Notes:	Approved: WB (0.2 - 1 µg/mL) Usage: Western Blot: Suggested dilution at 1 µg/mL in 5 % skim milk / PBS buffer, and HRP conjugated anti-Rabbit IgG should be diluted in 1: 50,000 - 100,000 as secondary antibody.
Comment:	Target Species of Antibody: Human
Restrictions:	For Research Use only

Handling

Format:	Lyophilized
Reconstitution:	Distilled water
Concentration:	Lot specific
Buffer:	Lyophilized from PBS with 2 % sucrose
Handling Advice:	Avoid repeat freeze-thaw cycles.
Storage:	4 °C, -20 °C
Storage Comment:	Long term: -20°C, the use of 50% glycerol is recommended if storing aliquots in -20°C for long term use (up to 1 year) Short term (less than 1 week): 4°C. Avoid freeze-thaw cycles.

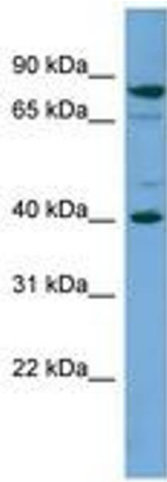


Image 1.