



[Go to Product page](#)

Datasheet for ABIN6745673
anti-DYX1C1 antibody (C-Term)

1 Image

Overview

Quantity:	100 µL
Target:	DYX1C1
Binding Specificity:	C-Term
Reactivity:	Human, Mouse, Rat, Dog, Cow, Guinea Pig, Zebrafish (Danio rerio), Monkey, Pig
Host:	Rabbit
Clonality:	Polyclonal
Conjugate:	This DYX1C1 antibody is un-conjugated
Application:	Western Blotting (WB)

Product Details

Immunogen:	Synthetic peptide from C-Terminus of human DYX1C1 (Q8WXU2, NP_570722). Percent identity by BLAST analysis: Human, Chimpanzee, Gorilla, Orangutan, Gibbon, Marmoset, Mouse, Rat, Bovine, Guinea pig (100%), Panda, Horse, Zebra finch, Chicken, Xenopus (92%), Zebrafish, Sea squirt (84%). Type of Immunogen: Synthetic peptide
Specificity:	Human DYX1C1
Predicted Reactivity:	Percent identity by BLAST analysis: Mouse, Rat, Bovine, Pig (100%) Dog, Chicken, Xenopus (92%) Zebrafish (84%).
Purification:	Immunoaffinity purified

Target Details

Target:	DYX1C1
Alternative Name:	DYX1C1 (DYX1C1 Products)
Background:	Name/Gene ID: DYX1C1 Synonyms: DYX1C1, DYXC1, EKN1, RD, DYX1
Gene ID:	161582
NCBI Accession:	NP_570722
UniProt:	Q8WXU2
Pathways:	Intracellular Steroid Hormone Receptor Signaling Pathway , Regulation of Intracellular Steroid Hormone Receptor Signaling

Application Details

Application Notes:	Approved: WB (0.2 - 1 µg/mL) Usage: Western Blot: Suggested dilution at 1 µg/mL in 5 % skim milk / PBS buffer, and HRP conjugated anti-Rabbit IgG should be diluted in 1: 50,000 - 100,000 as secondary antibody.
Comment:	Target Species of Antibody: Human
Restrictions:	For Research Use only

Handling

Format:	Lyophilized
Reconstitution:	Distilled water
Concentration:	Lot specific
Buffer:	Lyophilized from PBS with 2 % sucrose
Handling Advice:	Avoid repeat freeze-thaw cycles.
Storage:	4 °C,-20 °C
Storage Comment:	Long term: -20°C, the use of 50% glycerol is recommended if storing aliquots in -20°C for long term use (up to 1 year) Short term (less than 1 week): 4°C. Avoid freeze-thaw cycles.

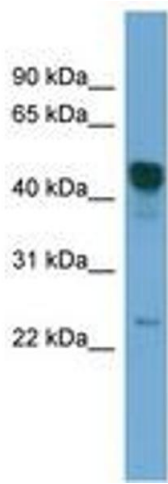


Image 1.