

Datasheet for ABIN6745676  
**anti-PDHA2 antibody (AA 71-120)**



[Go to Product page](#)

1 Image

## Overview

Quantity:	100 µL
Target:	PDHA2 (PDHa2)
Binding Specificity:	AA 71-120
Reactivity:	Human, Rabbit, Horse
Host:	Rabbit
Clonality:	Polyclonal
Conjugate:	This PDHA2 antibody is un-conjugated
Application:	Western Blotting (WB)

## Product Details

Immunogen:	Synthetic peptide located between aa71-120 of human PDHA2 (P29803, NP_005381). Percent identity by BLAST analysis: Human, Chimpanzee, Gorilla, Gibbon, Galago, Elephant, Rabbit (100%), Monkey, Marmoset, Mouse, Bovine, Opossum (92%), Rat, Hamster, Platypus (85%), Horse (84%).  Type of Immunogen: Synthetic peptide
Specificity:	Human PDHA2
Predicted Reactivity:	Percent identity by BLAST analysis: Mouse, Bovine (92%) Horse (84%).
Purification:	Immunoaffinity purified

## Target Details

---

Target:	PDHA2 (PDHa2)
Alternative Name:	PDHA2 ( <a href="#">PDHa2 Products</a> )
Background:	Name/Gene ID: PDHA2  Synonyms: PDHA2, PDHE1-A type II, PDHAL
Gene ID:	5161
NCBI Accession:	<a href="#">NP_005381</a>
UniProt:	<a href="#">P29803</a>
Pathways:	<a href="#">Warburg Effect</a>

## Application Details

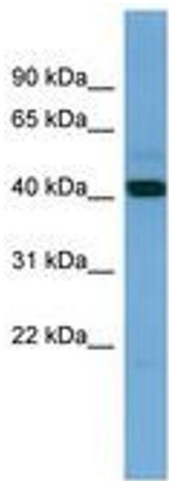
---

Application Notes:	Approved: WB (0.2 - 1 µg/mL)  Usage: Western Blot: Suggested dilution at 1 µg/mL in 5 % skim milk / PBS buffer, and HRP conjugated anti-Rabbit IgG should be diluted in 1: 50,000 - 100,000 as secondary antibody.
Comment:	Target Species of Antibody: Human
Restrictions:	For Research Use only

## Handling

---

Format:	Lyophilized
Reconstitution:	Distilled water
Concentration:	Lot specific
Buffer:	Lyophilized from PBS with 2 % sucrose
Handling Advice:	Avoid repeat freeze-thaw cycles.
Storage:	4 °C,-20 °C
Storage Comment:	Long term: -20°C, the use of 50% glycerol is recommended if storing aliquots in -20°C for long term use (up to 1 year)  Short term (less than 1 week): 4°C. Avoid freeze-thaw cycles.



**Image 1.**