



[Go to Product page](#)

Datasheet for ABIN6745692  
**anti-ANKRD39 antibody (AA 35-84)**

1 Image

Overview

Quantity:	100 µL
Target:	ANKRD39
Binding Specificity:	AA 35-84
Reactivity:	Mouse, Human, Cow, Dog, Guinea Pig, Horse, Rabbit, Rat, Monkey, Pig
Host:	Rabbit
Clonality:	Polyclonal
Conjugate:	This ANKRD39 antibody is un-conjugated
Application:	Western Blotting (WB)

Product Details

Immunogen:	Synthetic peptide located between aa35-84 of human ANKRD39 (Q53RE8, NP_057550). Percent identity by BLAST analysis: Human, Chimpanzee, Gorilla, Gibbon, Monkey, Marmoset, Mouse, Rat, Dog, Bovine, Rabbit, Horse, Pig, Guinea pig (100%), Bat (92%), Opossum (85%).  Type of Immunogen: Synthetic peptide
Specificity:	Human ANKRD39
Predicted Reactivity:	Percent identity by BLAST analysis: Mouse, Rat, Dog, Horse (100%).
Purification:	Immunoaffinity purified

Target Details

Target:	ANKRD39
---------	---------

## Target Details

---

Alternative Name:	ANKRD39 ( <a href="#">ANKRD39 Products</a> )
Background:	Name/Gene ID: ANKRD39  Synonyms: ANKRD39, Ankyrin repeat domain 39
Gene ID:	51239
NCBI Accession:	<a href="#">NP_057550</a>
UniProt:	<a href="#">Q53RE8</a>

## Application Details

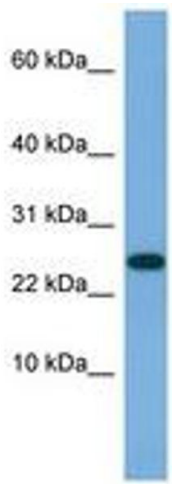
---

Application Notes:	Approved: WB (0.2 - 1 µg/mL)  Usage: Western Blot: Suggested dilution at 1 µg/mL in 5 % skim milk / PBS buffer, and HRP conjugated anti-Rabbit IgG should be diluted in 1: 50,000 - 100,000 as secondary antibody.
Comment:	Target Species of Antibody: Human
Restrictions:	For Research Use only

## Handling

---

Format:	Lyophilized
Reconstitution:	Distilled water
Concentration:	Lot specific
Buffer:	Lyophilized from PBS with 2 % sucrose
Handling Advice:	Avoid repeat freeze-thaw cycles.
Storage:	4 °C,-20 °C
Storage Comment:	Long term: -20°C, the use of 50% glycerol is recommended if storing aliquots in -20°C for long term use (up to 1 year)  Short term (less than 1 week): 4°C. Avoid freeze-thaw cycles.



**Image 1.**