



[Go to Product page](#)

Datasheet for ABIN6745694

## anti-ARHGAP20 antibody (AA 935-984)

### 1 Image

#### Overview

Quantity:	100 µL
Target:	ARHGAP20
Binding Specificity:	AA 935-984
Reactivity:	Human, Rat, Mouse, Cow, Horse, Dog, Guinea Pig, Rabbit, Monkey, Pig
Host:	Rabbit
Clonality:	Polyclonal
Conjugate:	This ARHGAP20 antibody is un-conjugated
Application:	Western Blotting (WB)

#### Product Details

Immunogen:	Synthetic peptide located between aa935-984 of human ARHGAP20 (Q9P2F6, NP_065860). Percent identity by BLAST analysis: Human, Chimpanzee, Gorilla, Gibbon, Monkey, Galago, Marmoset, Mouse, Rat, Elephant, Dog, Bovine, Rabbit, Horse, Pig, Opossum, Guinea pig, Platypus (100%).  Type of Immunogen: Synthetic peptide
Specificity:	Human ARHGAP20
Predicted Reactivity:	Percent identity by BLAST analysis: Mouse, Dog, Bovine, Rabbit, Horse, Pig, Guinea pig (100%).
Purification:	Immunoaffinity purified

## Target Details

---

Target:	ARHGAP20
Alternative Name:	ARHGAP20 ( <a href="#">ARHGAP20 Products</a> )
Background:	Name/Gene ID: ARHGAP20  Synonyms: ARHGAP20, KIAA1391, RARHOGAP
Gene ID:	57569
NCBI Accession:	<a href="#">NP_065860</a>
UniProt:	<a href="#">Q9P2F6</a>

## Application Details

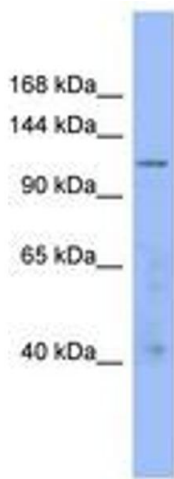
---

Application Notes:	Approved: WB (0.2 - 1 µg/mL)  Usage: Western Blot: Suggested dilution at 1 µg/mL in 5 % skim milk / PBS buffer, and HRP conjugated anti-Rabbit IgG should be diluted in 1: 50,000 - 100,000 as secondary antibody.
Comment:	Target Species of Antibody: Human
Restrictions:	For Research Use only

## Handling

---

Format:	Lyophilized
Reconstitution:	Distilled water
Concentration:	Lot specific
Buffer:	Lyophilized from PBS with 2 % sucrose
Handling Advice:	Avoid repeat freeze-thaw cycles.
Storage:	4 °C, -20 °C
Storage Comment:	Long term: -20°C, the use of 50% glycerol is recommended if storing aliquots in -20°C for long term use (up to 1 year)  Short term (less than 1 week): 4°C. Avoid freeze-thaw cycles.



**Image 1.**