

Datasheet for ABIN6745698

## anti-HSP90AA1 antibody (AA 108-157)



[Go to Product page](#)

### 3 Images

#### Overview

Quantity:	100 µL
Target:	HSP90AA1
Binding Specificity:	AA 108-157
Reactivity:	Human, Mouse, Rat, Monkey, Rabbit, Guinea Pig, Pig, Hamster
Host:	Rabbit
Clonality:	Polyclonal
Conjugate:	This HSP90AA1 antibody is un-conjugated
Application:	Western Blotting (WB), Immunohistochemistry (IHC), Immunohistochemistry (Paraffin-embedded Sections) (IHC (p))

#### Product Details

Brand:	IHC-plus™
Immunogen:	Synthetic peptide located between aa108-157 of human HSP90AA1 (P07900, NP_001017963). Percent identity by BLAST analysis: Human, Chimpanzee, Orangutan, Gibbon, Monkey, Galago, Marmoset, Mouse, Rat, Hamster, Elephant, Rabbit, Pig, Guinea pig (100%), Gorilla, Sheep, Bovine, Bat, Horse (92%), Turkey, Zebra finch, Chicken (84%).  Type of Immunogen: Synthetic peptide
Specificity:	Human HSP90AA1 / Hsp90
Predicted Reactivity:	Percent identity by BLAST analysis: Human, Mouse (100%) Bovine (92%) Chicken (84%).
Purification:	Immunoaffinity purified

## Target Details

Target:	HSP90AA1
Alternative Name:	HSP90AA1 / Hsp90 Alpha A1 ( <a href="#">HSP90AA1 Products</a> )
Background:	Name/Gene ID: HSP90AA1  Synonyms: HSP90AA1, EL52, HSP86, Hsp89, HSP89A, HSPC1, Heat shock 86 kDa, Hsp90, HSP90A, HSP90N, HSPCA, HSPCAL4, HSPN, LAP2, HSP 86, HSPCAL1
Gene ID:	3320
NCBI Accession:	<a href="#">NP_001017963</a>
UniProt:	<a href="#">P07900</a>
Pathways:	<a href="#">M Phase</a> , <a href="#">Regulation of Cell Size</a> , <a href="#">Signaling Events mediated by VEGFR1 and VEGFR2</a> , <a href="#">VEGFR1 Specific Signals</a>

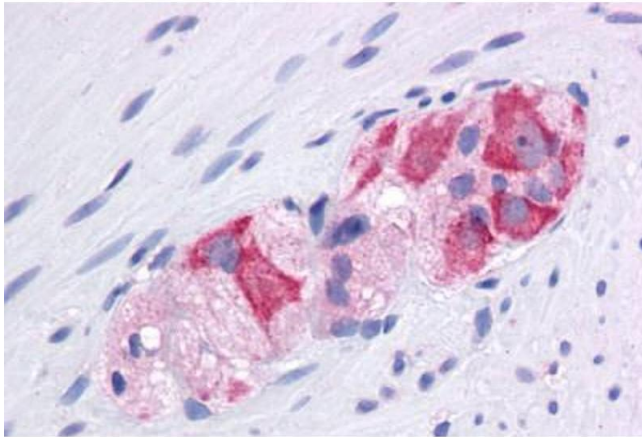
## Application Details

Application Notes:	Approved: IHC, IHC-P (5 µg/mL), WB (0.2 - 1 µg/mL)  Usage: Western Blot: Performed with MCF-7 cells, suggested dilution at 1 µg/mL in 5 % skim milk / PBS buffer, and HRP conjugated anti-Rabbit IgG should be diluted in 1: 50,000 - 100,000 as secondary antibody.
Comment:	Target Species of Antibody: Human
Restrictions:	For Research Use only

## Handling

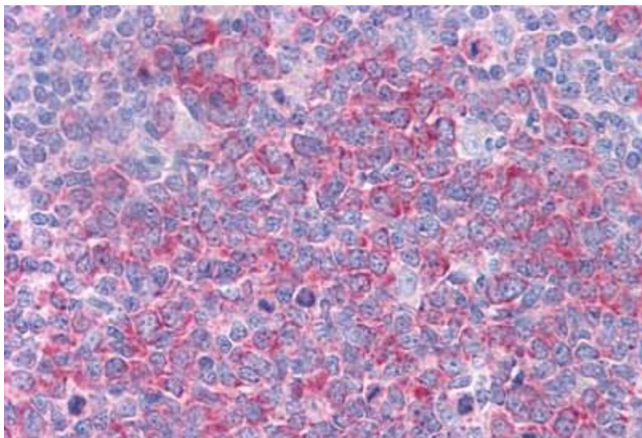
Format:	Lyophilized
Reconstitution:	Distilled water
Concentration:	Lot specific
Buffer:	Lyophilized from PBS with 2 % sucrose
Handling Advice:	Avoid repeat freeze-thaw cycles.
Storage:	4 °C, -20 °C
Storage Comment:	Long term: -20°C, the use of 50% glycerol is recommended if storing aliquots in -20°C for long term use (up to 1 year)

Short term (less than 1 week): 4°C. Avoid freeze-thaw cycles.



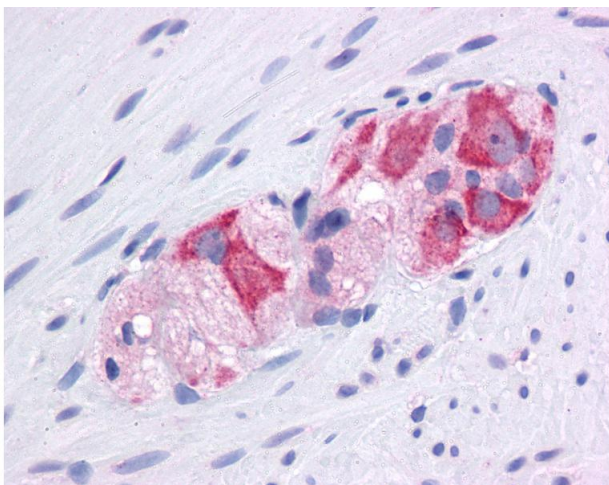
### Immunohistochemistry (Formalin-fixed Paraffin-embedded Sections)

**Image 1.** Human Colon, Myenteric Plexus: Formalin-Fixed, Paraffin-Embedded (FFPE)



### Immunohistochemistry (Formalin-fixed Paraffin-embedded Sections)

**Image 2.** Human Tonsil: Formalin-Fixed, Paraffin-Embedded (FFPE)



### Immunohistochemistry

**Image 3.** Anti-HSP90AA1 / Hsp90 antibody IHC of human colon, myenteric plexus. Immunohistochemistry of formalin-fixed, paraffin-embedded tissue after heat-induced antigen retrieval. Antibody concentration 5 ug/ml. This image was taken for the unconjugated for ...