

Datasheet for ABIN6745701  
**anti-STAT6 antibody (AA 614-663)**

## 5 Images

[Go to Product page](#)

## Overview

Quantity:	100 µL
Target:	STAT6
Binding Specificity:	AA 614-663
Reactivity:	Human, Mouse, Rat, Dog, Monkey, Cow, Rabbit, Pig, Horse, Guinea Pig, Bat, Hamster
Host:	Rabbit
Clonality:	Polyclonal
Conjugate:	This STAT6 antibody is un-conjugated
Application:	Western Blotting (WB), Immunohistochemistry (IHC), Immunohistochemistry (Paraffin-embedded Sections) (IHC (p))

## Product Details

Brand:	IHC-plus™
Immunogen:	Synthetic peptide located between aa614-663 of human STAT6 (P42226, NP_003144). Percent identity by BLAST analysis: Human, Gorilla, Orangutan, Gibbon, Monkey, Galago, Marmoset, Mouse, Rat, Hamster, Elephant, Panda, Dog, Bovine, Bat, Rabbit, Horse, Pig, Guinea pig (100%), Mosquito (81%).  Type of Immunogen: Synthetic peptide
Isotype:	IgG
Specificity:	Human STAT6
Predicted Reactivity:	Percent identity by BLAST analysis: Human, Mouse, Rat, Dog, Bovine, Rabbit, Horse, Pig (100%).

## Product Details

Purification: Immunoaffinity purified

## Target Details

Target: STAT6

Alternative Name: STAT6 ([STAT6 Products](#))

Background: Name/Gene ID: STAT6

Synonyms: STAT6, D12S1644, IL-4-STAT, Stat-6, STAT6B, STAT6C, STAT, interleukin4-induced, IL-4 Stat, Transcription factor IL-4 STAT

Gene ID: 6778

NCBI Accession: [NP\\_003144](#)

UniProt: [P42226](#)

Pathways: [JAK-STAT Signaling](#), [Regulation of Leukocyte Mediated Immunity](#), [Positive Regulation of Immune Effector Process](#), [Production of Molecular Mediator of Immune Response](#)

## Application Details

Application Notes: Approved: IHC, IHC-P (5 µg/mL), WB

Usage: ELISA titer using peptide based assay: 1:312500. Western Blot: using Hela cell lysates suggested dilution at 1 µg/mL in 5 % skim milk / PBS buffer, and HRP conjugated anti-Rabbit IgG should be diluted in 1:50000 - 100000 as second antibody.

Comment: Target Species of Antibody: Human

Restrictions: For Research Use only

## Handling

Format: Lyophilized

Reconstitution: Distilled Water.

Concentration: Lot specific

Buffer: Lyophilized from PBS with 2 % sucrose

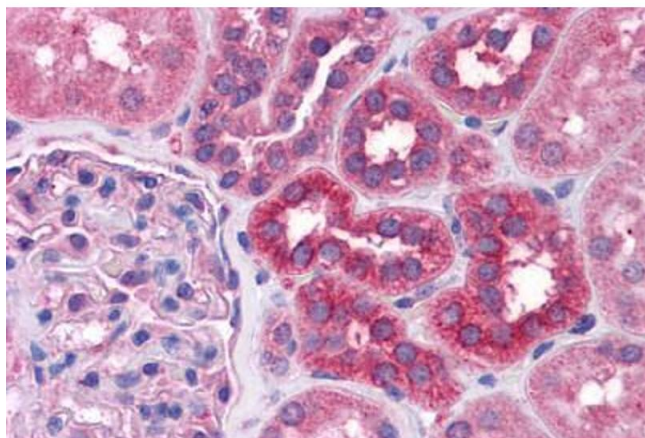
Handling Advice: Avoid repeat freeze-thaw cycles.

## Handling

Storage: 4 °C, -20 °C

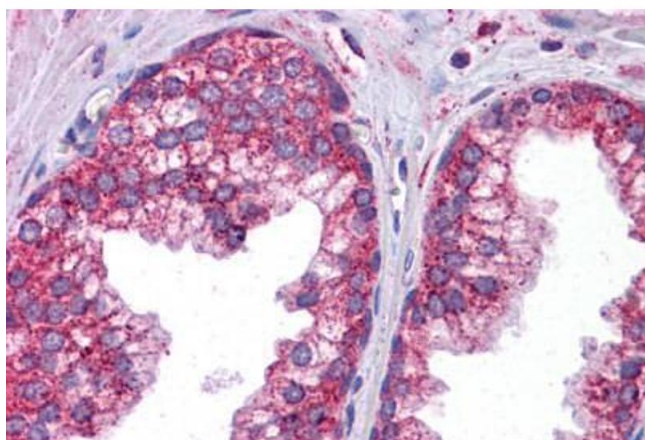
Storage Comment: Long term: -20°C, the use of 50% glycerol is recommended if storing aliquots in -20°C for long term use (up to 1 year)  
Short term (less than 1 week): 4°C. Avoid freeze-thaw cycles.

## Images



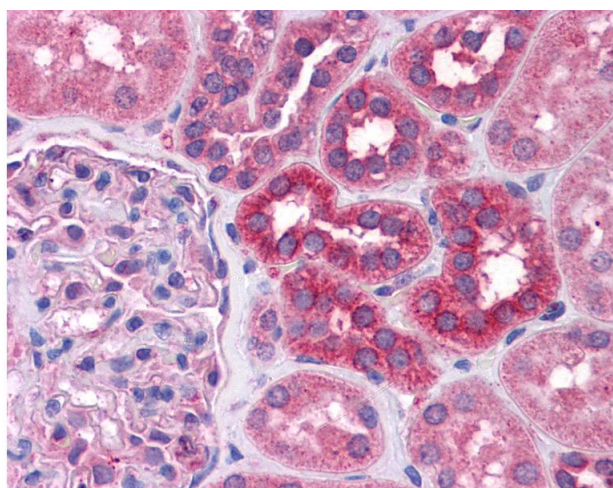
### Immunohistochemistry

**Image 1.** Anti-STAT6 antibody IHC staining of human kidney. Immunohistochemistry of formalin-fixed, paraffin-embedded tissue after heat-induced antigen retrieval. Antibody ABIN574485 concentration 5 ug/ml.



### Immunohistochemistry (Formalin-fixed Paraffin-embedded Sections)

**Image 2.** Human Prostate: Formalin-Fixed, Paraffin-Embedded (FFPE)



### Immunohistochemistry

**Image 3.** Anti-STAT6 antibody IHC of human kidney. Immunohistochemistry of formalin-fixed, paraffin-embedded tissue after heat-induced antigen retrieval. Antibody concentration 5 ug/ml. This image was taken for the unconjugated form of this product. Other for ...

## Images

---

Please check the [product details page](#) for more images. Overall 5 images are available for ABIN6745701.