



[Go to Product page](#)

Datasheet for ABIN6745709
anti-STAT5B antibody (AA 180-229)

3 Images

Overview

Quantity:	100 µL
Target:	STAT5B
Binding Specificity:	AA 180-229
Reactivity:	Human, Cow, Dog, Horse, Pig, Sheep
Host:	Rabbit
Clonality:	Polyclonal
Conjugate:	This STAT5B antibody is un-conjugated
Application:	Western Blotting (WB), Immunohistochemistry (IHC), Immunohistochemistry (Paraffin-embedded Sections) (IHC (p))

Product Details

Brand:	IHC-plus™
Immunogen:	Synthetic peptide located between aa180-229 of human STAT5B (P51692, NP_036580). Percent identity by BLAST analysis: Human, Chimpanzee, Gorilla, Galago, Sheep, Elephant, Panda, Dog, Bovine, Horse, Pig (100%), Monkey, Mouse, Rat, Hamster, Bat, Rabbit, Opossum, Platypus (92%), Guinea pig (91%). Type of Immunogen: Synthetic peptide
Isotype:	IgG
Specificity:	Human STAT5b
Predicted Reactivity:	Percent identity by BLAST analysis: Human, Dog, Horse, Pig (100%) Rabbit (92%).

Product Details

Purification: Immunoaffinity purified

Target Details

Target: STAT5B

Alternative Name: STAT5B / STAT ([STAT5B Products](#))

Background: Name/Gene ID: STAT5B

Synonyms: STAT5B, Transcription factor STAT5B, STAT5

Gene ID: 6777

NCBI Accession: [NP_036580](#)

UniProt: [P51692](#)

Pathways: [JAK-STAT Signaling](#), [RTK Signaling](#), [Response to Growth Hormone Stimulus](#), [C21-Steroid Hormone Metabolic Process](#), [Regulation of Leukocyte Mediated Immunity](#), [Positive Regulation of Immune Effector Process](#), [CXCR4-mediated Signaling Events](#), [Activated T Cell Proliferation](#)

Application Details

Application Notes: Approved: IHC, IHC-P (5 µg/mL), WB (1 µg/mL)

Usage: Western Blot: Suggested dilution at 1 µg/mL in 5 % skim milk / PBS buffer, and HRP conjugated anti-Rabbit IgG should be diluted in 1: 50,000 - 100,000 as second antibody. ELISA titer in peptide based assay: 1:62500.

Comment: Target Species of Antibody: Human

Restrictions: For Research Use only

Handling

Format: Lyophilized

Reconstitution: Distilled water

Concentration: Lot specific

Buffer: Lyophilized from PBS with 2 % sucrose

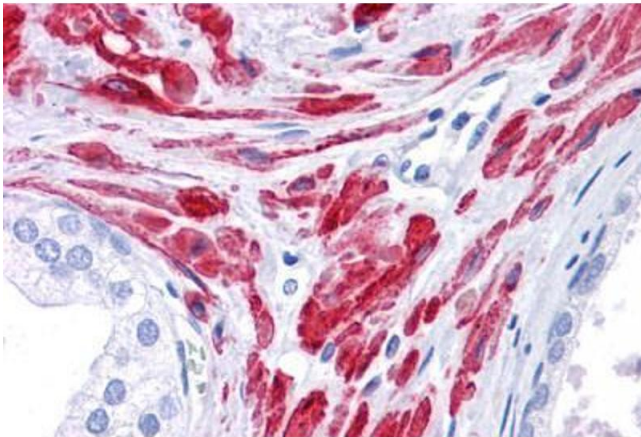
Handling Advice: Avoid repeat freeze-thaw cycles.

Handling

Storage: 4 °C, -20 °C

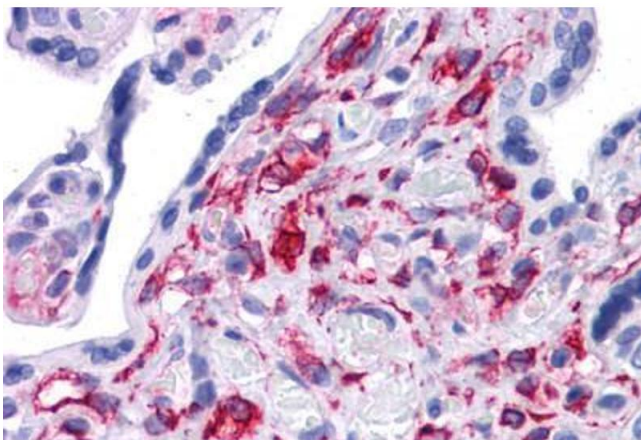
Storage Comment: Long term: -20°C, the use of 50% glycerol is recommended if storing aliquots in -20°C for long term use (up to 1 year)
Short term (less than 1 week): 4°C. Avoid freeze-thaw cycles.

Images



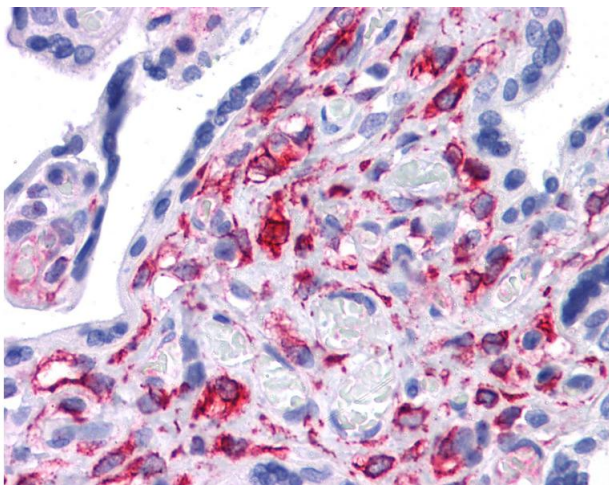
Immunohistochemistry (Formalin-fixed Paraffin-embedded Sections)

Image 1. Human Prostate: Formalin-Fixed, Paraffin-Embedded (FFPE)



Immunohistochemistry (Formalin-fixed Paraffin-embedded Sections)

Image 2. Human Placenta: Formalin-Fixed, Paraffin-Embedded (FFPE)



Immunohistochemistry

Image 3. Anti-STAT5B antibody IHC of human placenta. Immunohistochemistry of formalin-fixed, paraffin-embedded tissue after heat-induced antigen retrieval. Antibody concentration 5 ug/ml. This image was taken for the unconjugated form of this product. Other ...