

Datasheet for ABIN6745713  
**anti-KCNA10 antibody (N-Term)**[Go to Product page](#)

## 2 Images

## Overview

|                      |  |
|----------------------|--|
| Quantity:            | 100 µL   |
| Target:              | KCNA10   |
| Binding Specificity: | N-Term   |
| Reactivity:          | Human, Mouse, Rat, Horse, Monkey   |
| Host:                | Rabbit   |
| Clonality:           | Polyclonal   |
| Conjugate:           | This KCNA10 antibody is un-conjugated  |
| Application:         | Western Blotting (WB), Immunohistochemistry (IHC), Immunohistochemistry (Paraffin-embedded Sections) (IHC (p)) |

## Product Details

|                       |  |
|-----------------------|--|
| Brand:                | IHC-plus™  |
| Immunogen:            | Synthetic peptide from N-Terminus of human KCNA10 (Q16322, NP_005540). Percent identity by BLAST analysis: Human, Gorilla, Gibbon, Monkey (100%), Bovine, Guinea pig (92%), Galago, Mouse, Rat (85%), Horse (84%).<br><br>Type of Immunogen: Synthetic peptide |
| Specificity:          | Human KCNA10 / Kv1.8   |
| Predicted Reactivity: | Percent identity by BLAST analysis: Bovine (92%) Mouse, Rat (85%) Horse (84%).   |
| Purification:         | Immunoaffinity purified  |

## Target Details

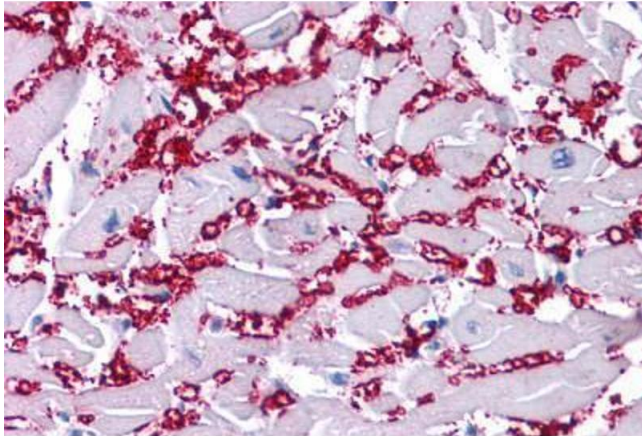
|                   |   |
|-------------------|---|
| Target:           | KCNA10  |
| Alternative Name: | KCNA10 ( <a href="#">KCNA10 Products</a> )  |
| Background:       | Name/Gene ID: KCNA10<br>Subfamily: Potassium channel - Kv1 Shaker<br>Family: Ion Channel<br><br>Synonyms: KCNA10, Kv1.8, Kcn1 |
| Gene ID:          | 3744  |
| NCBI Accession:   | <a href="#">NP_005540</a>   |
| UniProt:          | <a href="#">Q16322</a>  |

## Application Details

|                    |  |
|--------------------|--|
| Application Notes: | Approved: IHC, IHC-P (5 µg/mL), WB (0.2 - 1 µg/mL)<br><br>Usage: Western Blot: Suggested dilution at 1 µg/mL in 5 % skim milk / PBS buffer, and HRP conjugated anti-Rabbit IgG should be diluted in 1: 50,000 - 100,000 as secondary antibody. |
| Comment:           | Target Species of Antibody: Human  |
| Restrictions:      | For Research Use only  |

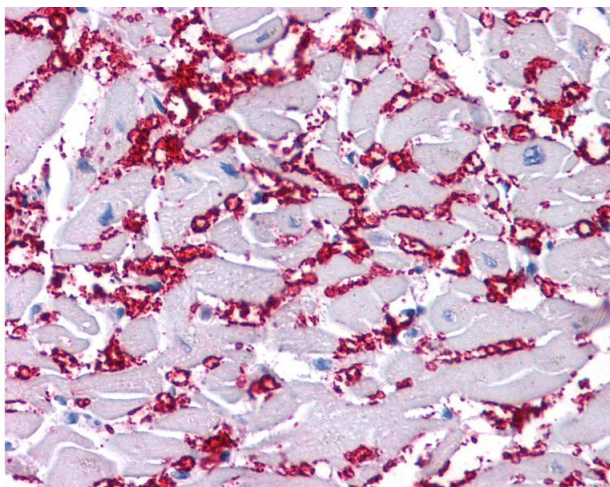
## Handling

|                  |   |
|------------------|---|
| Format:          | Lyophilized   |
| Reconstitution:  | Distilled water   |
| Concentration:   | Lot specific  |
| Buffer:          | Lyophilized from PBS with 2 % sucrose   |
| Handling Advice: | Avoid repeat freeze-thaw cycles.  |
| Storage:         | 4 °C, -20 °C  |
| Storage Comment: | Long term: -20°C, the use of 50% glycerol is recommended if storing aliquots in -20°C for long term use (up to 1 year)<br>Short term (less than 1 week): 4°C. Avoid freeze-thaw cycles. |



#### Immunohistochemistry (Formalin-fixed Paraffin-embedded Sections)

**Image 1.** Human Heart: Formalin-Fixed, Paraffin-Embedded (FFPE)



#### Immunohistochemistry

**Image 2.** Anti-KCNA10 / Kv1.8 antibody IHC of human heart. Immunohistochemistry of formalin-fixed, paraffin-embedded tissue after heat-induced antigen retrieval. Antibody concentration 5 ug/ml. This image was taken for the unconjugated form of this product. O ...