



[Go to Product page](#)

Datasheet for ABIN6745717  
**anti-MAF antibody (N-Term)**

3 Images

Overview

Quantity:	100 µL
Target:	MAF
Binding Specificity:	N-Term
Reactivity:	Human, Mouse, Rat, Cow, Chicken, Dog, Guinea Pig, Monkey, Xenopus laevis
Host:	Rabbit
Clonality:	Polyclonal
Conjugate:	This MAF antibody is un-conjugated
Application:	Western Blotting (WB), Immunohistochemistry (IHC), Immunohistochemistry (Paraffin-embedded Sections) (IHC (p))

Product Details

Brand:	IHC-plus™
Immunogen:	Synthetic peptide from N-Terminus of human MAF (O75444, NP_001026974). Percent identity by BLAST analysis: Human, Chimpanzee, Gorilla, Gibbon, Marmoset, Mouse, Rat, Elephant, Dog, Bovine, Opossum, Zebra finch, Chicken, Xenopus (100%), Zebrafish (92%), Stickleback (85%).  Type of Immunogen: Synthetic peptide
Specificity:	Human MAF
Predicted Reactivity:	Percent identity by BLAST analysis: Human, Mouse, Rat, Dog, Bovine, Chicken (100%) Zebrafish (92%).
Purification:	Immunoaffinity purified

## Target Details

---

Target:	MAF
Alternative Name:	c-Maf ( <a href="#">MAF Products</a> )
Background:	Name/Gene ID: MAF  Synonyms: MAF, C-MAF, CCA4, C-maf proto-oncogene, Proto-oncogene c-Maf, T lymphocyte c-maf long form, Transcription factor Maf
Gene ID:	4094
NCBI Accession:	<a href="#">NP_001026974</a>
UniProt:	<a href="#">O75444</a>

## Application Details

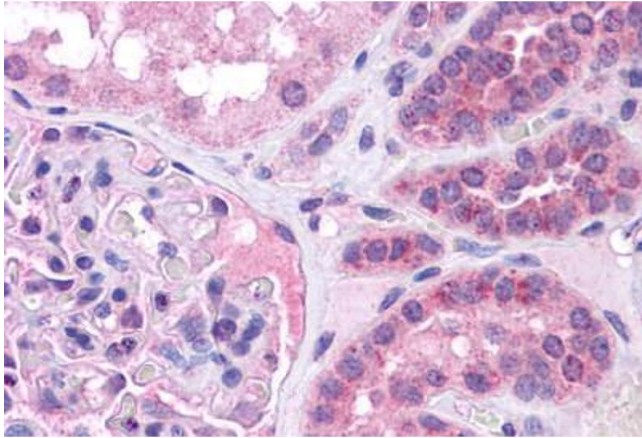
---

Application Notes:	Approved: IHC, IHC-P (5 µg/mL), WB (0.2 - 1 µg/mL)  Usage: Western Blot: Suggested dilution at 1 µg/mL in 5 % skim milk / PBS buffer, and HRP conjugated anti-Rabbit IgG should be diluted in 1: 50,000 - 100,000 as secondary antibody.
Comment:	Target Species of Antibody: Human
Restrictions:	For Research Use only

## Handling

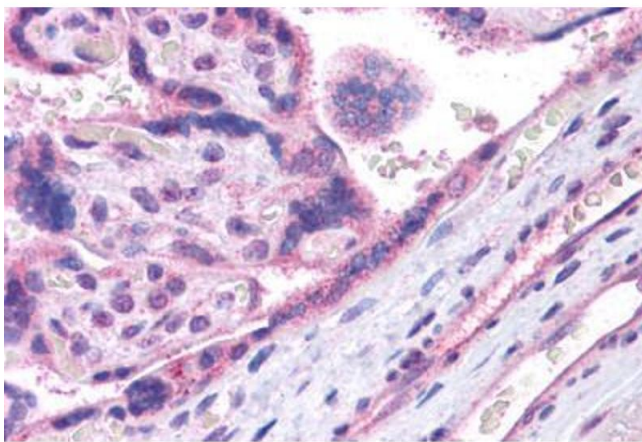
---

Format:	Lyophilized
Reconstitution:	Distilled water
Concentration:	Lot specific
Buffer:	Lyophilized from PBS with 2 % sucrose
Handling Advice:	Avoid repeat freeze-thaw cycles.
Storage:	4 °C, -20 °C
Storage Comment:	Long term: -20°C, the use of 50% glycerol is recommended if storing aliquots in -20°C for long term use (up to 1 year)  Short term (less than 1 week): 4°C. Avoid freeze-thaw cycles.



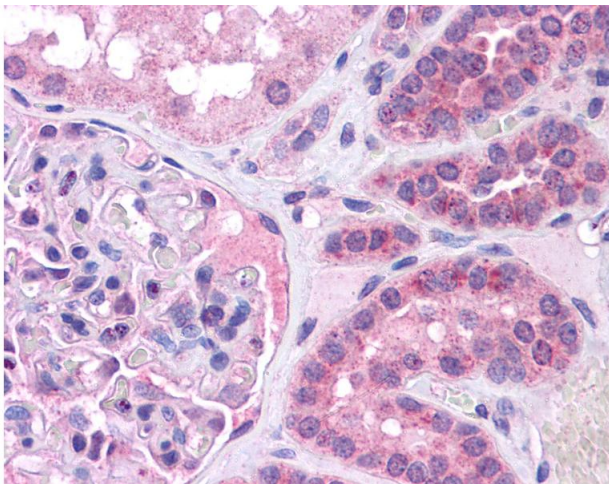
### Immunohistochemistry (Formalin-fixed Paraffin-embedded Sections)

**Image 1.** Human Kidney: Formalin-Fixed, Paraffin-Embedded (FFPE)



### Immunohistochemistry (Formalin-fixed Paraffin-embedded Sections)

**Image 2.** Human Placenta: Formalin-Fixed, Paraffin-Embedded (FFPE)



### Immunohistochemistry

**Image 3.** Anti-MAF antibody IHC of human kidney. Immunohistochemistry of formalin-fixed, paraffin-embedded tissue after heat-induced antigen retrieval. Antibody concentration 5 ug/ml. This image was taken for the unconjugated form of this product. Other forms ...