

Datasheet for ABIN6745728 anti-TST antibody (AA 101-150)



[Go to Product page](#)

3 Images

Overview

Quantity:	100 µL
Target:	TST
Binding Specificity:	AA 101-150
Reactivity:	Human, Mouse, Rat, Dog, Rabbit, Cow, Horse, Bat, Hamster, Monkey
Host:	Rabbit
Clonality:	Polyclonal
Conjugate:	This TST antibody is un-conjugated
Application:	Western Blotting (WB), Immunohistochemistry (IHC), Immunohistochemistry (Paraffin-embedded Sections) (IHC (p))

Product Details

Brand:	IHC-plus™
Immunogen:	Synthetic peptide located between aa101-150 of human TST (Q16762, NP_003303). Percent identity by BLAST analysis: Human, Gibbon, Monkey, Mouse, Rat, Hamster, Elephant, Dog, Bovine, Bat, Rabbit, Horse (100%), Galago, Pig, Guinea pig (92%), Rice (90%), Platypus, Lizard (85%), Chicken (84%). Type of Immunogen: Synthetic peptide
Isotype:	IgG
Specificity:	Human TST
Predicted Reactivity:	Percent identity by BLAST analysis: Human, Mouse, Dog (100%) Pig (92%) Chicken (84%).

Product Details

Purification: Immunoaffinity purified

Target Details

Target: TST

Alternative Name: Rhodanese / TST ([TST Products](#))

Background: Name/Gene ID: TST

Synonyms: TST, Rhodanese, Thiosulfate sulfurtransferase, RDS

Gene ID: 7263

NCBI Accession: [NP_003303](#)

UniProt: [Q16762](#)

Application Details

Application Notes: Approved: IHC, IHC-P (5 µg/mL), WB (1 µg/mL)

Comment: Target Species of Antibody: Human

Restrictions: For Research Use only

Handling

Format: Lyophilized

Reconstitution: After adding water, will consist of PBS buffer with 2 % sucrose

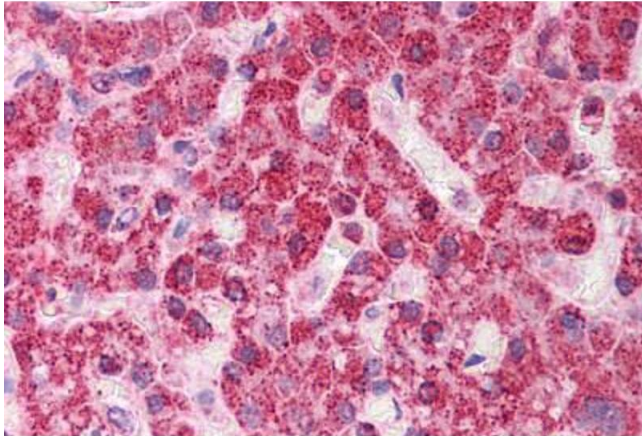
Concentration: Lot specific

Buffer: Lyophilized from PBS with 2 % sucrose

Handling Advice: Avoid repeat freeze-thaw cycles.

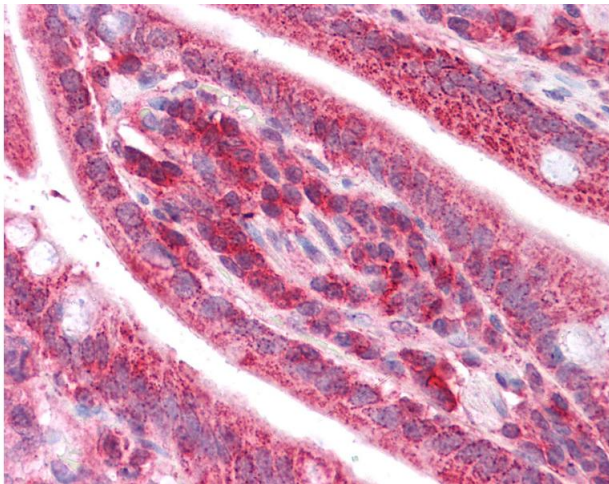
Storage: 4 °C, -20 °C

Storage Comment: Long term: -20°C, the use of 50% glycerol is recommended if storing aliquots in -20°C for long term use (up to 1 year)
Short term (less than 1 week): 4°C. Avoid freeze-thaw cycles.



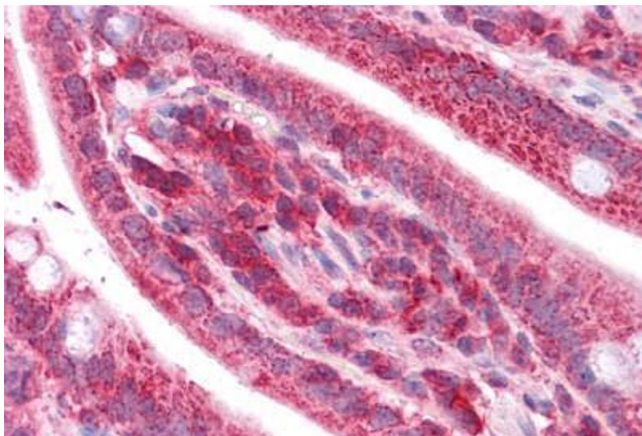
Immunohistochemistry (Formalin-fixed Paraffin-embedded Sections)

Image 1. Human Liver: Formalin-Fixed, Paraffin-Embedded (FFPE)



Immunohistochemistry

Image 2. Anti-TST antibody IHC of human small intestine. Immunohistochemistry of formalin-fixed, paraffin-embedded tissue after heat-induced antigen retrieval. Antibody concentration 5 ug/ml. This image was taken for the unconjugated form of this product. Ot ...



Immunohistochemistry (Formalin-fixed Paraffin-embedded Sections)

Image 3. Human Small Intestine: Formalin-Fixed, Paraffin-Embedded (FFPE)