

Datasheet for ABIN6745738
anti-LRRC8B antibody (AA 542-591)[Go to Product page](#)

4 Images

Overview

Quantity:	100 µL
Target:	LRRC8B
Binding Specificity:	AA 542-591
Reactivity:	Human, Mouse, Rat, Cow, Guinea Pig, Horse, Monkey, Pig
Host:	Rabbit
Clonality:	Polyclonal
Conjugate:	This LRRC8B antibody is un-conjugated
Application:	Western Blotting (WB), Immunohistochemistry (IHC), Immunohistochemistry (Paraffin-embedded Sections) (IHC (p))

Product Details

Brand:	IHC-plus™
Immunogen:	<p>Synthetic peptide located between aa542-591 of human LRRC8B (Q6P9F7, NP_056165).</p> <p>Percent identity by BLAST analysis: Human, Chimpanzee, Gorilla, Gibbon, Monkey, Galago, Marmoset, Mouse, Rat, Elephant, Panda, Bovine, Horse, Pig, Guinea pig (100%), Dog, Rabbit, Platypus (92%), Lizard (85%).</p> <p>Type of Immunogen: Synthetic peptide</p>
Isotype:	IgG
Specificity:	Human LRRC8B
Predicted Reactivity:	Percent identity by BLAST analysis: Mouse, Rat, Bovine, Horse, Pig, Guinea pig (100%) Dog,

Product Details

Rabbit (92%).

Purification: Immunoaffinity purified

Target Details

Target: LRRC8B

Alternative Name: LRRC8B ([LRRC8B Products](#))

Background: Name/Gene ID: LRRC8B

Synonyms: LRRC8B, KIAA0231, TALRRP, TA-LRRP

Gene ID: 23507

NCBI Accession: [NP_056165](#)

UniProt: [Q6P9F7](#)

Application Details

Application Notes: Approved: IHC, IHC-P (5 µg/mL), WB

Usage: ELISA titer using peptide based assay: 1:62500. Western Blot: Suggested dilution at 1 µg/mL in 5 % skim milk / PBS buffer, and HRP conjugated anti-Rabbit IgG should be diluted in 1:50000 - 100000 as second antibody.

Comment: Target Species of Antibody: Human

Restrictions: For Research Use only

Handling

Format: Lyophilized

Reconstitution: Distilled Water.

Concentration: Lot specific

Buffer: Lyophilized from PBS with 2 % sucrose

Handling Advice: Avoid repeat freeze-thaw cycles.

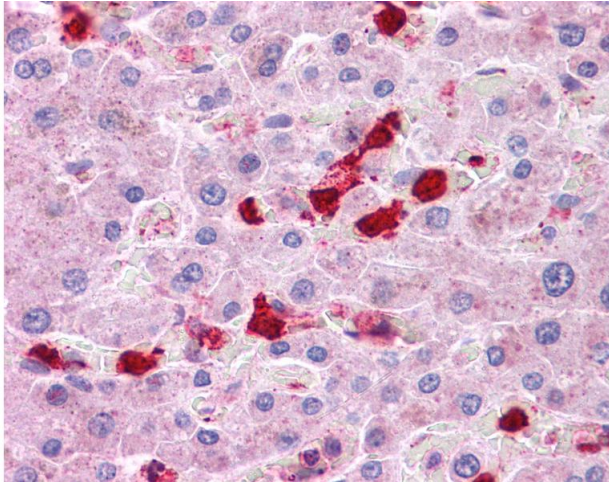
Storage: 4 °C, -20 °C

Storage Comment: Long term: -20°C, the use of 50% glycerol is recommended if storing aliquots in -20°C for long

term use (up to 1 year)

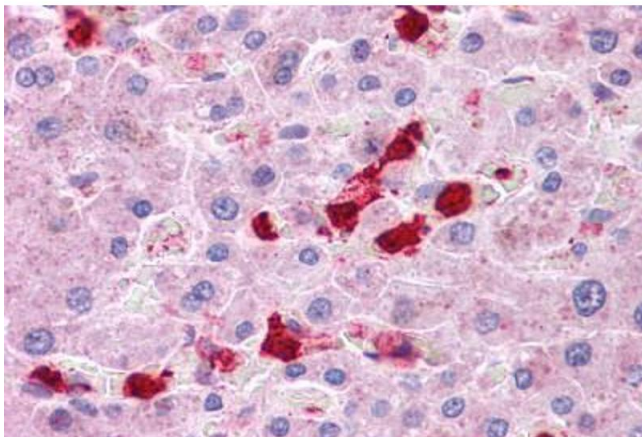
Short term (less than 1 week): 4°C. Avoid freeze-thaw cycles.

Images



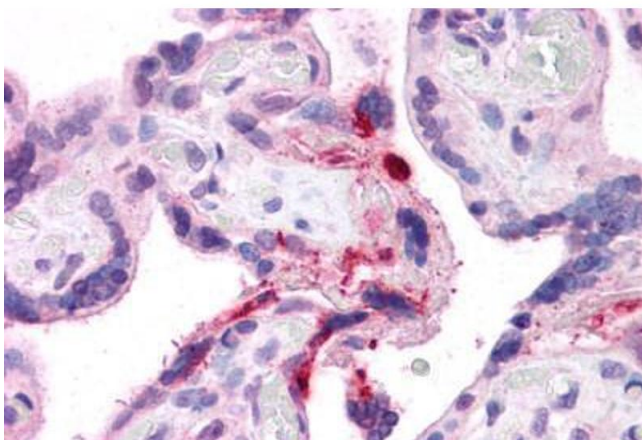
Immunohistochemistry

Image 1. Anti-LRRC8B antibody IHC of human liver. Immunohistochemistry of formalin-fixed, paraffin-embedded tissue after heat-induced antigen retrieval. Antibody concentration 5 ug/ml. This image was taken for the unconjugated form of this product. Other for ...



Immunohistochemistry (Formalin-fixed Paraffin-embedded Sections)

Image 2. Human Liver: Formalin-Fixed, Paraffin-Embedded (FFPE)



Immunohistochemistry (Formalin-fixed Paraffin-embedded Sections)

Image 3. Human Placenta: Formalin-Fixed, Paraffin-Embedded (FFPE)

Please check the [product details page](#) for more images. Overall 4 images are available for ABIN6745738.