



Datasheet for ABIN6745745
anti-LRRC59 antibody (N-Term)



[Go to Product page](#)

3 Images

Overview

| | |
|----------------------|--|
| Quantity: | 100 µL |
| Target: | LRRC59 |
| Binding Specificity: | N-Term |
| Reactivity: | Human, Mouse, Rat, Dog, Cow, Guinea Pig, Pig, Monkey, Bat |
| Host: | Rabbit |
| Clonality: | Polyclonal |
| Conjugate: | This LRRC59 antibody is un-conjugated |
| Application: | Western Blotting (WB), Immunohistochemistry (IHC), Immunohistochemistry (Paraffin-embedded Sections) (IHC (p)) |

Product Details

| | |
|-----------------------|---|
| Brand: | IHC-plus™ |
| Immunogen: | Synthetic peptide from N-Terminus of human LRRC59 (Q5RJR8, NP_060979). Percent identity by BLAST analysis: Human, Chimpanzee, Gorilla, Gibbon, Monkey, Galago, Marmoset, Mouse, Rat, Panda, Dog, Bovine, Bat, Pig, Guinea pig (100%), Elephant, Rabbit (92%). Type of Immunogen: Synthetic peptide |
| Isotype: | IgG |
| Specificity: | Human LRRC59 |
| Predicted Reactivity: | Percent identity by BLAST analysis: Mouse, Dog, Pig, Guinea pig (100%) Rabbit (92%). |
| Purification: | Immunoaffinity purified |

Target Details

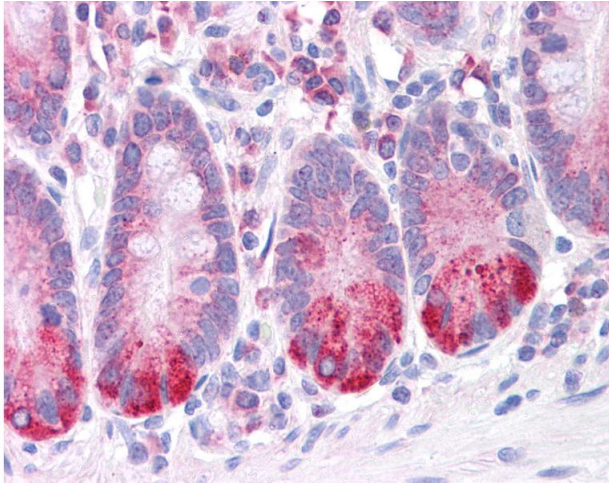
| | |
|-------------------|--|
| Target: | LRRC59 |
| Alternative Name: | LRRC59 (LRRC59 Products) |
| Background: | Name/Gene ID: LRRC59 Synonyms: LRRC59, FLJ21675, p34, PR01855 |
| Gene ID: | 55379 |
| NCBI Accession: | NP_060979 |
| UniProt: | Q96AG4 |

Application Details

| | |
|--------------------|--|
| Application Notes: | Approved: IHC, IHC-P (5 µg/mL), WB Usage: ELISA titer using peptide based assay: 1:62500. Western Blot: Suggested dilution at 1 µg/mL in 5 % skim milk / PBS buffer, and HRP conjugated anti-Rabbit IgG should be diluted in 1:50000 - 100000 as second antibody. |
| Comment: | Target Species of Antibody: Human |
| Restrictions: | For Research Use only |

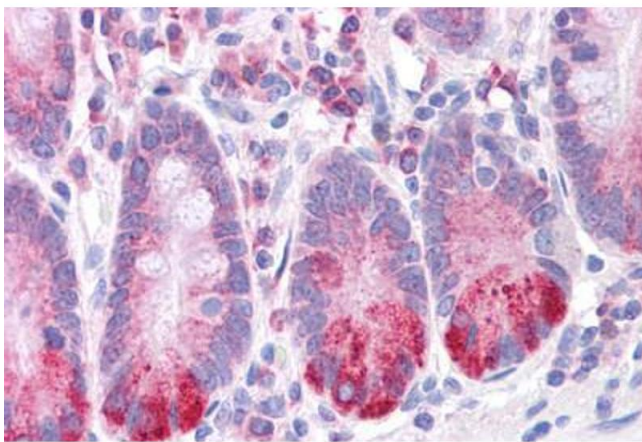
Handling

| | |
|------------------|---|
| Format: | Lyophilized |
| Reconstitution: | Distilled Water. |
| Concentration: | Lot specific |
| Buffer: | Lyophilized from PBS with 2 % sucrose |
| Handling Advice: | Avoid repeat freeze-thaw cycles. |
| Storage: | 4 °C, -20 °C |
| Storage Comment: | Long term: -20°C, the use of 50% glycerol is recommended if storing aliquots in -20°C for long term use (up to 1 year) Short term (less than 1 week): 4°C. Avoid freeze-thaw cycles. |



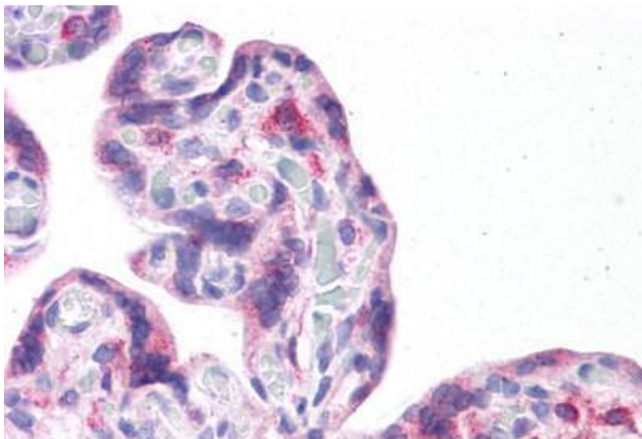
Immunohistochemistry

Image 1. Anti-LRRC59 antibody IHC of human small intestine. Immunohistochemistry of formalin-fixed, paraffin-embedded tissue after heat-induced antigen retrieval. Antibody concentration 5 ug/ml. This image was taken for the unconjugated form of this product. ...



Immunohistochemistry (Formalin-fixed Paraffin-embedded Sections)

Image 2. Human Small Intestine: Formalin-Fixed, Paraffin-Embedded (FFPE)



Immunohistochemistry (Formalin-fixed Paraffin-embedded Sections)

Image 3. Human Placenta: Formalin-Fixed, Paraffin-Embedded (FFPE)