



[Go to Product page](#)

Datasheet for ABIN6745746
anti-LRRC59 antibody (AA 201-250)

2 Images

Overview

Quantity:	100 µL
Target:	LRRC59
Binding Specificity:	AA 201-250
Reactivity:	Human, Mouse, Rat, Dog, Rabbit, Pig, Monkey
Host:	Rabbit
Clonality:	Polyclonal
Conjugate:	This LRRC59 antibody is un-conjugated
Application:	Western Blotting (WB), Immunohistochemistry (IHC), Immunohistochemistry (Paraffin-embedded Sections) (IHC (p))

Product Details

Brand:	IHC-plus™
Immunogen:	Synthetic peptide located between aa201-250 of human LRRC59 (Q96AG4, NP_060979). Percent identity by BLAST analysis: Human, Chimpanzee, Gorilla, Gibbon, Galago, Marmoset, Mouse, Rat, Elephant, Panda, Dog, Rabbit, Pig (100%), Bovine, Horse, Guinea pig (92%), Bat (85%). Type of Immunogen: Synthetic peptide
Isotype:	IgG
Specificity:	Human LRRC59
Predicted Reactivity:	Percent identity by BLAST analysis: Mouse, Dog, Rabbit, Pig (100%) Horse, Guinea pig (92%).

Product Details

Purification: Immunoaffinity purified

Target Details

Target: LRRRC59

Alternative Name: LRRRC59 ([LRRRC59 Products](#))

Background: Name/Gene ID: LRRRC59

Synonyms: LRRRC59, FLJ21675, p34, PRO1855

Gene ID: 55379

NCBI Accession: [NP_060979](#)

UniProt: [Q96AG4](#)

Application Details

Application Notes: Approved: IHC, IHC-P (5 µg/mL), WB

Usage: ELISA titer using peptide based assay: 1:12500. Western Blot: Suggested dilution at 0.25 µg/mL in 5 % skim milk / PBS buffer, and HRP conjugated anti-Rabbit IgG should be diluted in 1:50000 - 100000 as second antibody.

Comment: Target Species of Antibody: Human

Restrictions: For Research Use only

Handling

Format: Lyophilized

Reconstitution: Distilled Water.

Concentration: Lot specific

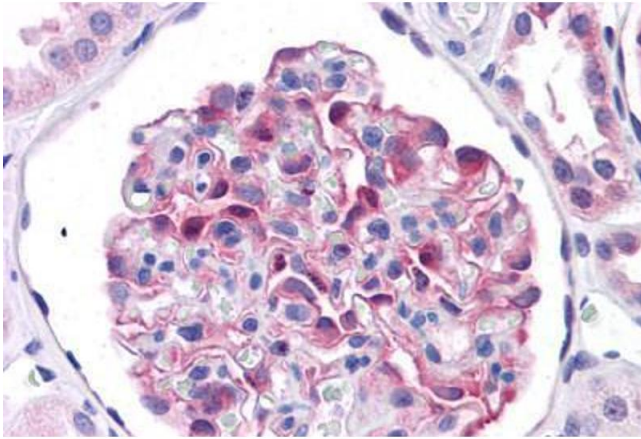
Buffer: Lyophilized from PBS with 2 % sucrose

Handling Advice: Avoid repeat freeze-thaw cycles.

Storage: 4 °C, -20 °C

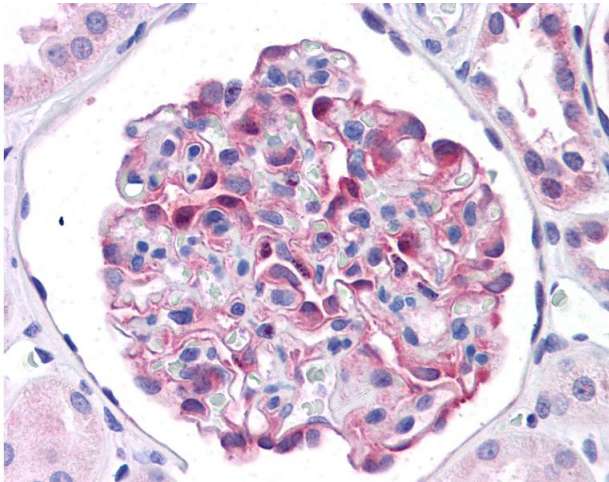
Storage Comment: Long term: -20°C, the use of 50% glycerol is recommended if storing aliquots in -20°C for long term use (up to 1 year)

Short term (less than 1 week): 4°C. Avoid freeze-thaw cycles.



Immunohistochemistry (Formalin-fixed Paraffin-embedded Sections)

Image 1. Human Kidney: Formalin-Fixed, Paraffin-Embedded (FFPE)



Immunohistochemistry

Image 2. Anti-LRRC59 antibody IHC of human kidney. Immunohistochemistry of formalin-fixed, paraffin-embedded tissue after heat-induced antigen retrieval. Antibody concentration 5 ug/ml. This image was taken for the unconjugated form of this product. Other fo ...