



[Go to Product page](#)

Datasheet for ABIN6745752
anti-ACAT1 antibody (AA 218-267)

2 Images

Overview

Quantity:	100 µL
Target:	ACAT1
Binding Specificity:	AA 218-267
Reactivity:	Human, Mouse, Rat, Dog, Monkey, Rabbit, Horse, Guinea Pig, Hamster, Bat, Chicken, Xenopus laevis
Host:	Rabbit
Clonality:	Polyclonal
Conjugate:	This ACAT1 antibody is un-conjugated
Application:	Western Blotting (WB), Immunohistochemistry (IHC), Immunohistochemistry (Paraffin-embedded Sections) (IHC (p))

Product Details

Brand:	IHC-plus™
Immunogen:	Synthetic peptide located between aa218-267 of human ACAT1 (P35610, NP_000010). Percent identity by BLAST analysis: Human, Chimpanzee, Gorilla, Gibbon, Monkey, Galago, Marmoset, Mouse, Rat, Hamster, Elephant, Dog, Bat, Rabbit, Horse, Opossum, Guinea pig, Turkey, Chicken, Xenopus (100%), Bovine (92%), Beetle (90%), Zebrafish (85%), Salmon, Smelt, Stickleback (84%), Drosophila (83%). Type of Immunogen: Synthetic peptide
Isotype:	IgG

Product Details

Specificity:	Human ACAT1
Predicted Reactivity:	Percent identity by BLAST analysis: Mouse, Dog, Rabbit, Guinea pig, Chicken (100%).
Purification:	Immunoaffinity purified

Target Details

Target:	ACAT1
Alternative Name:	ACAT1 (ACAT1 Products)
Background:	Name/Gene ID: ACAT1 Synonyms: ACAT1, ACAT, Acetoacetyl-CoA thiolase, Acetyl-CoA acetyltransferase 1, MAT, T2, THIL
Gene ID:	38
NCBI Accession:	NP_000010
UniProt:	P24752

Application Details

Application Notes:	Approved: IHC, IHC-P (5 µg/mL), WB Usage: ELISA titer using peptide based assay: 1:312500. Western Blot: Suggested dilution at 1 µg/mL in 5 % skim milk / PBS buffer, and HRP conjugated anti-Rabbit IgG should be diluted in 1:50000 - 100000 as second antibody.
Comment:	Target Species of Antibody: Human
Restrictions:	For Research Use only

Handling

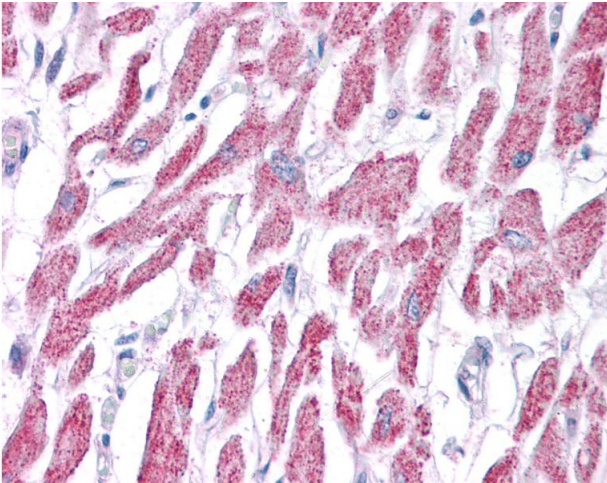
Format:	Lyophilized
Reconstitution:	Distilled Water.
Concentration:	Lot specific
Buffer:	Lyophilized from PBS with 2 % sucrose
Handling Advice:	Avoid repeat freeze-thaw cycles.

Handling

Storage: 4 °C, -20 °C

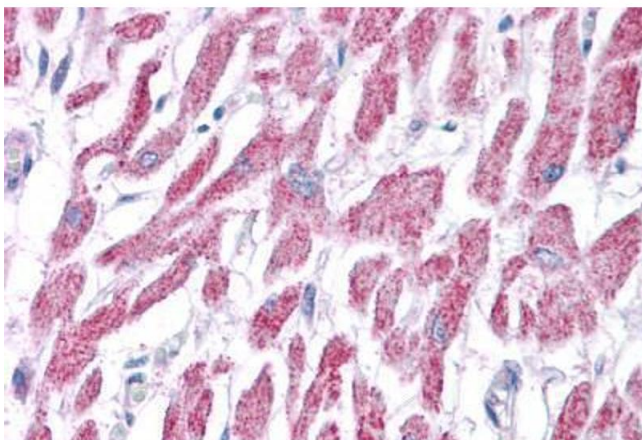
Storage Comment: Long term: -20°C, the use of 50% glycerol is recommended if storing aliquots in -20°C for long term use (up to 1 year)
Short term (less than 1 week): 4°C. Avoid freeze-thaw cycles.

Images



Immunohistochemistry

Image 1. Anti-ACAT1 antibody IHC of human heart. Immunohistochemistry of formalin-fixed, paraffin-embedded tissue after heat-induced antigen retrieval. Antibody concentration 5 ug/ml. This image was taken for the unconjugated form of this product. Other form ...



Immunohistochemistry (Formalin-fixed Paraffin-embedded Sections)

Image 2. Human Heart: Formalin-Fixed, Paraffin-Embedded (FFPE)